

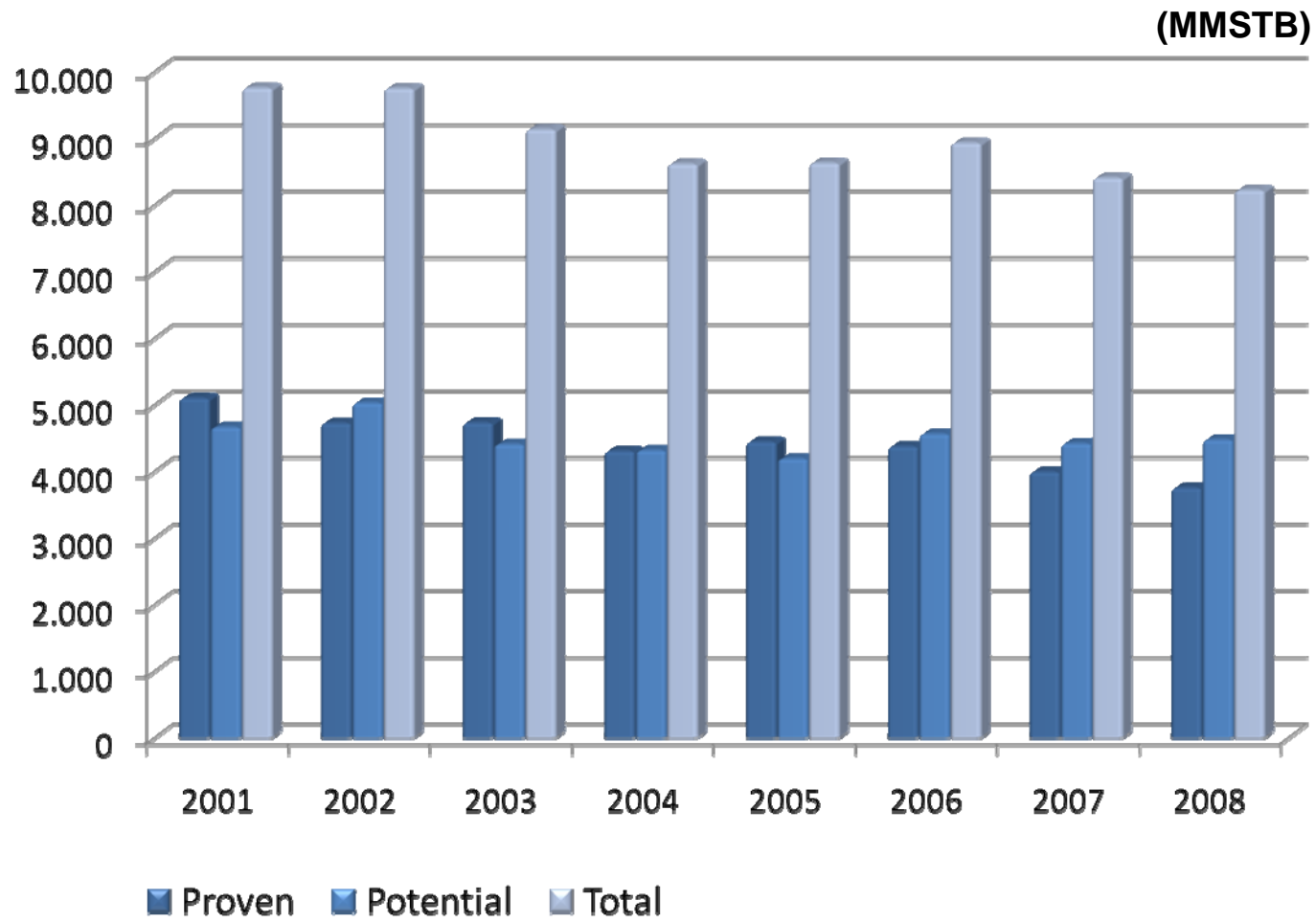


INDONESIA ENERGY STATISTICS 2009

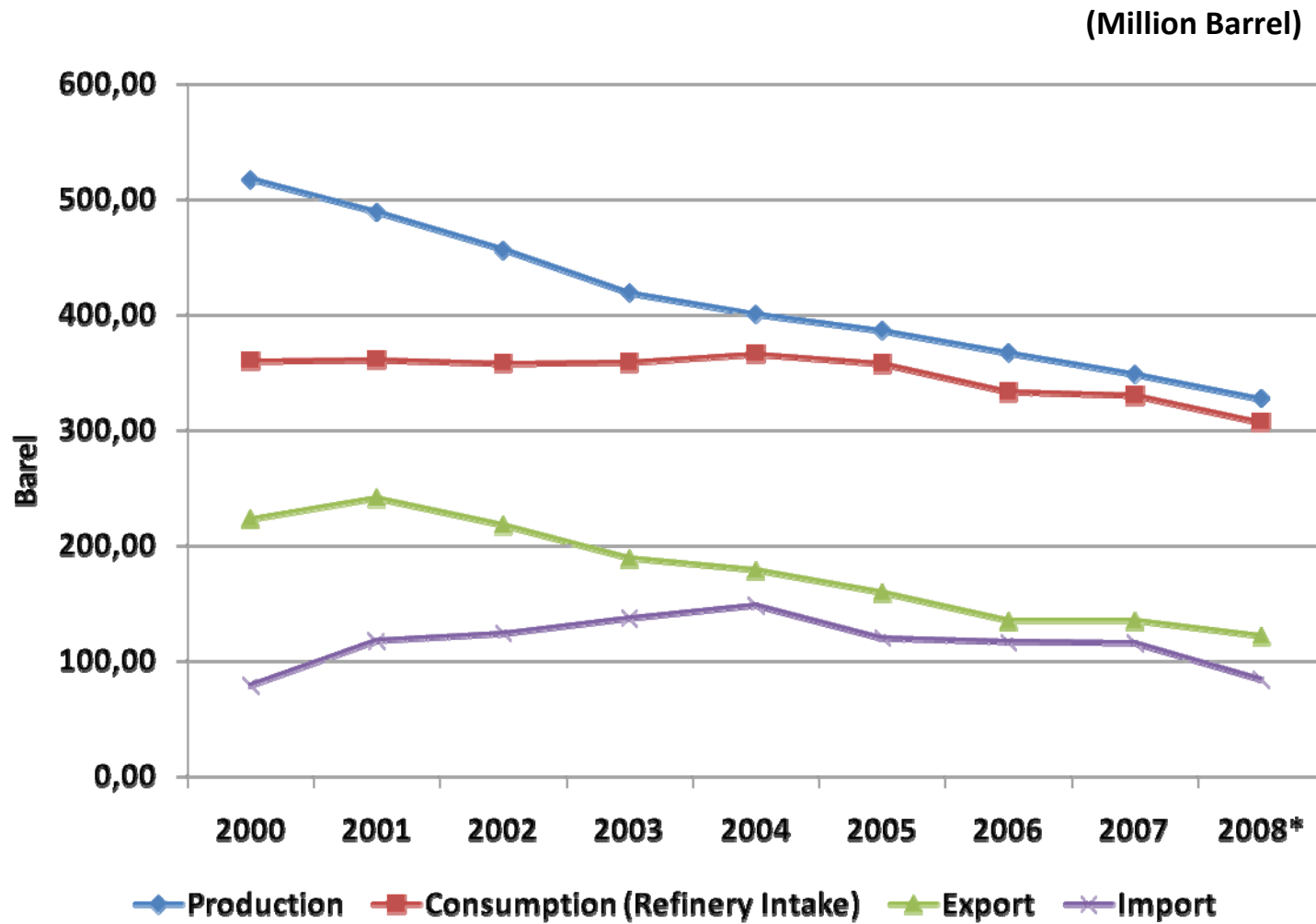


MINISTRY OF ENERGY AND MINERAL RESOURCES

CRUDE OIL RESERVES

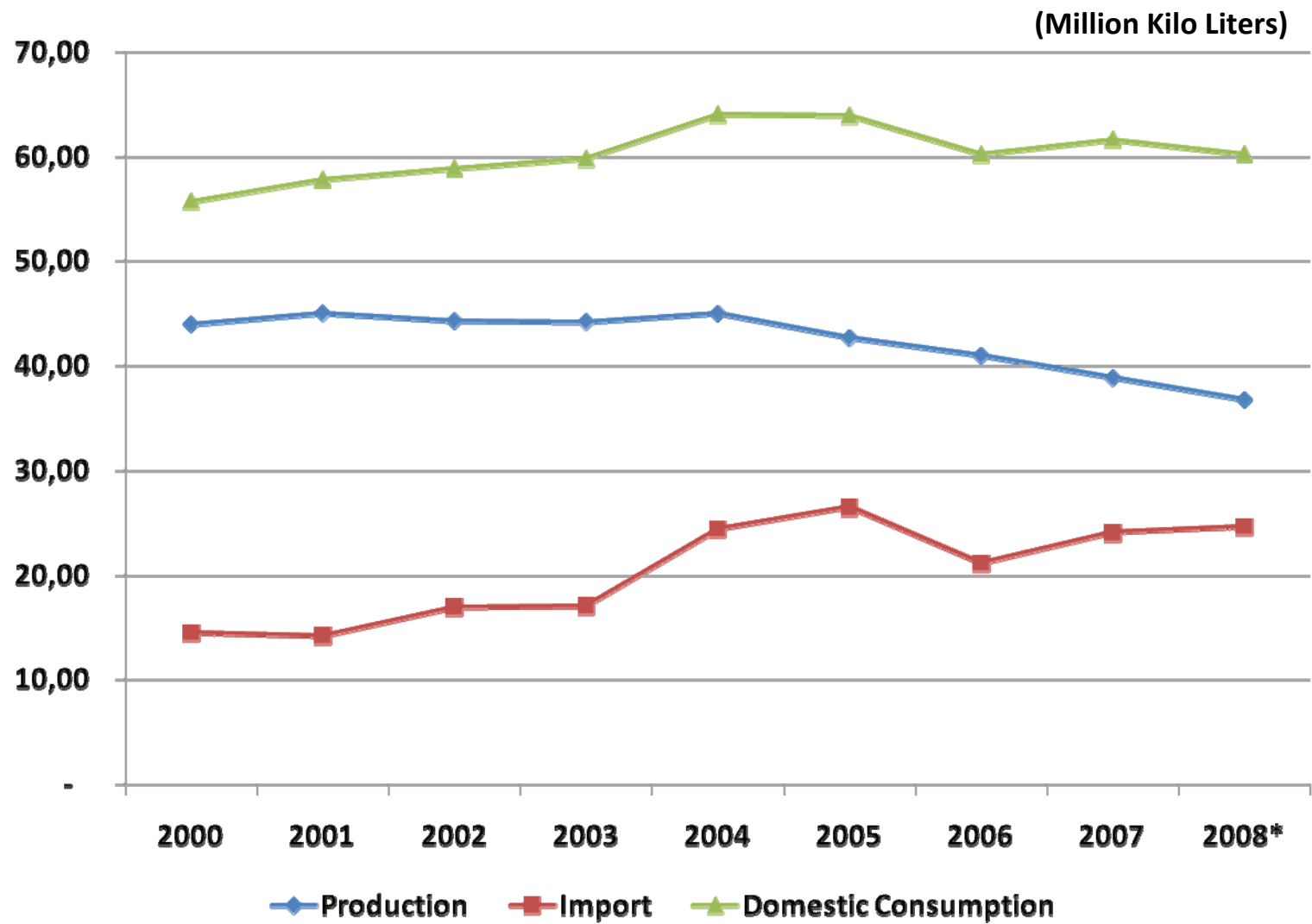


OIL PRODUCTION, CONSUMPTION (REFINERY INTAKE), EXPORT AND IMPORT



* Temporary

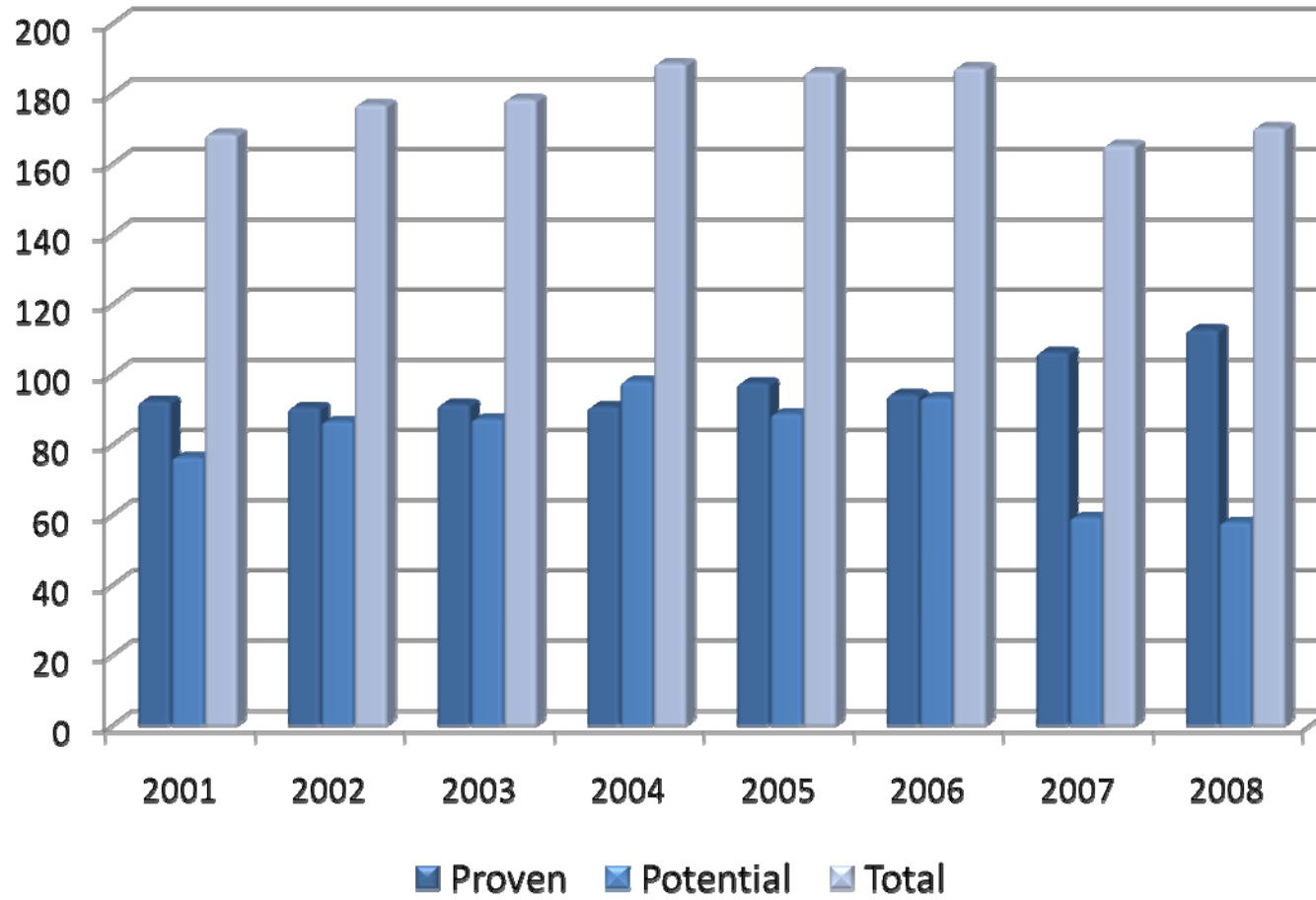
FUEL PRODUCTION, IMPORT AND DOMESTIC SALES



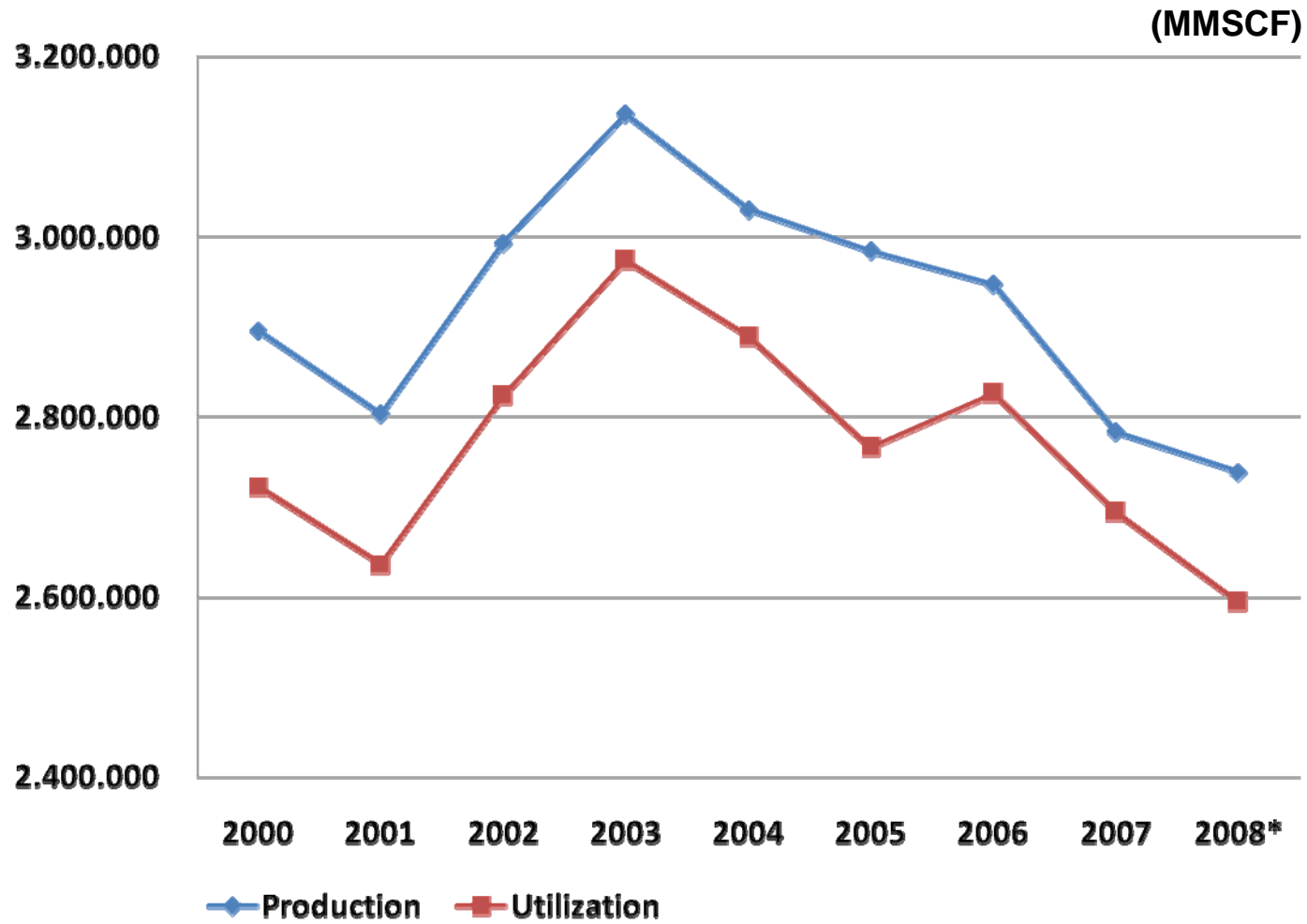
* Temporary

GAS RESERVES

(TSCF)



GAS PRODUCTION AND UTILIZATION



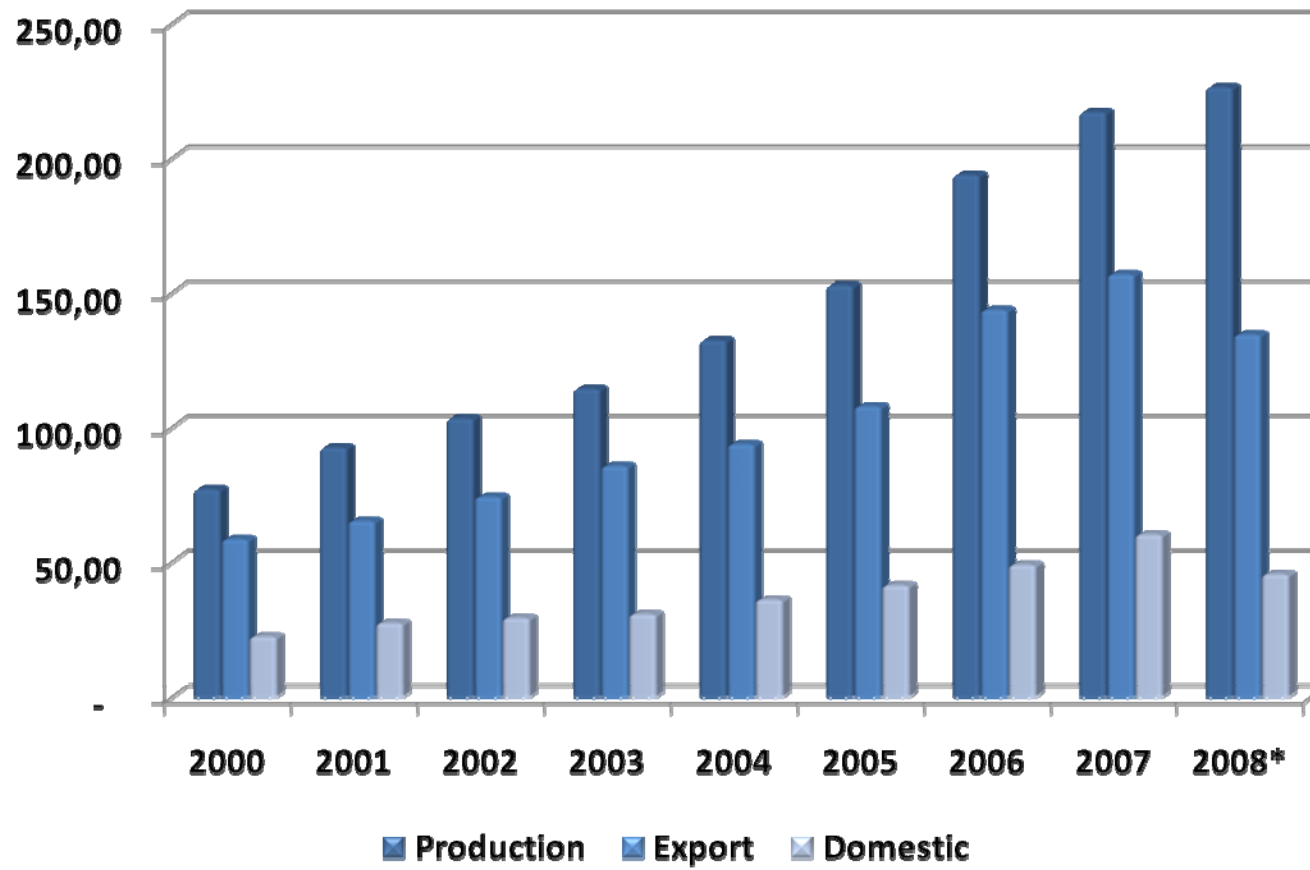
* Temporary

COAL RESOURCES AND RESERVES

(Million Tons)

No	Province	Resources					Reserves (Million Ton)		Total
		Hipotetic	Inferred	Indicated	Measured	Total	Probable	Proven	
1	Jawa	5.47	6.65	0.00	2.09	14.21	0.00	0.00	0.00
2	Sumatera	20,148.47	13,949.29	10,734.37	7,699.18	52,531.31	12,997.82	904.80	13,902.62
3	Kalimantan	3,389.28	21,028.93	2,893.82	13,156.04	40,468.07	413.14	4,395.49	4,808.63
4	Sulawesi	0.00	146.91	33.09	53.10	233.10	0.00	0.00	0.00
5	Maluku	0.00	2.13	0.00	0.00	2.13	0.00	0.00	0.00
6	Papua	89.40	64.02	0.00	0.00	153.42	0.00	0.00	0.00
	Total	23,632.62	35,197.93	13,661.29	20,910.41	93,402.24	13,410.96	5,300.29	18,711.25

COAL PRODUCTION, EXPORT AND DOMESTIC SALES (Million Tons)

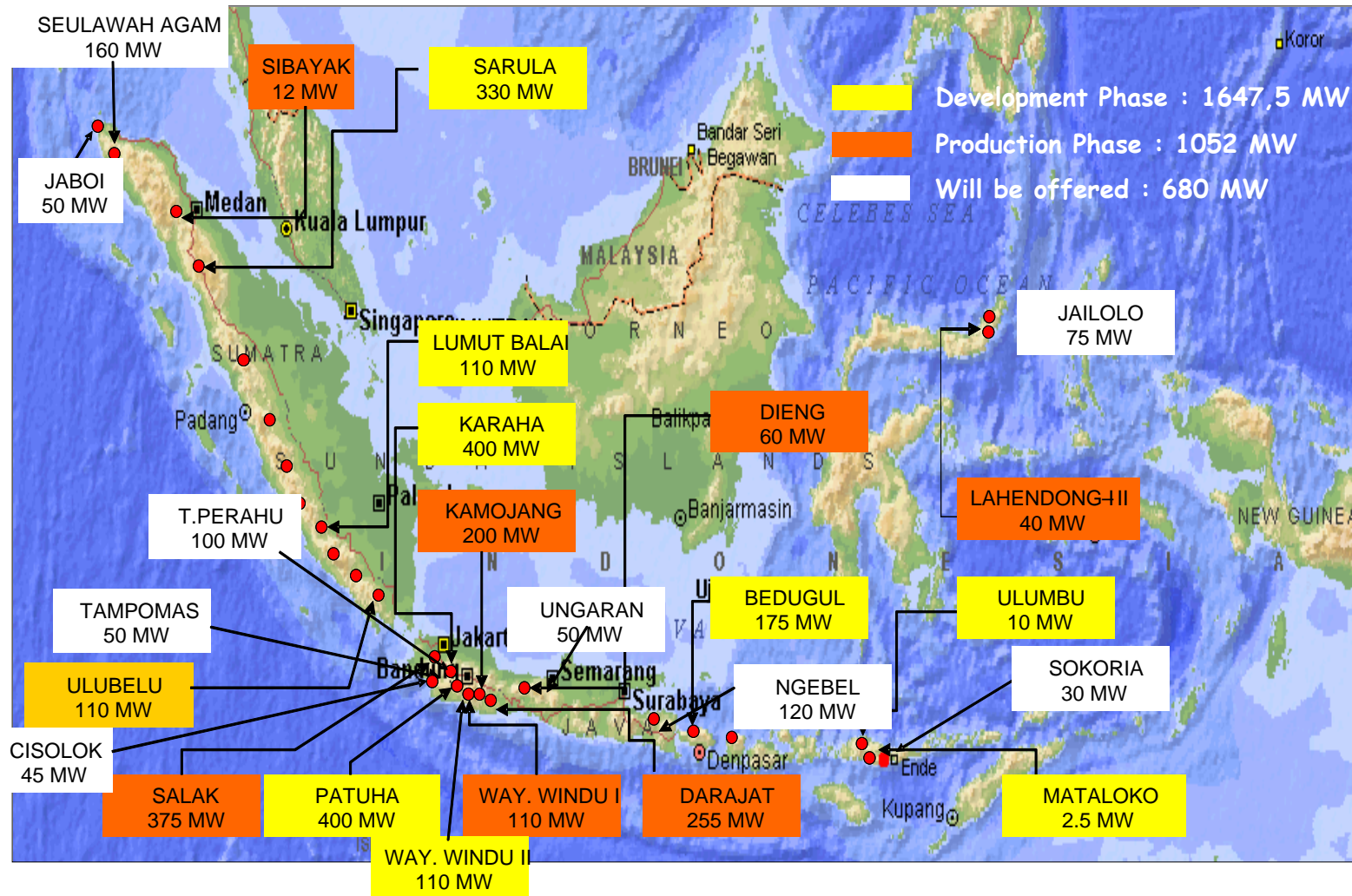


* Temporary

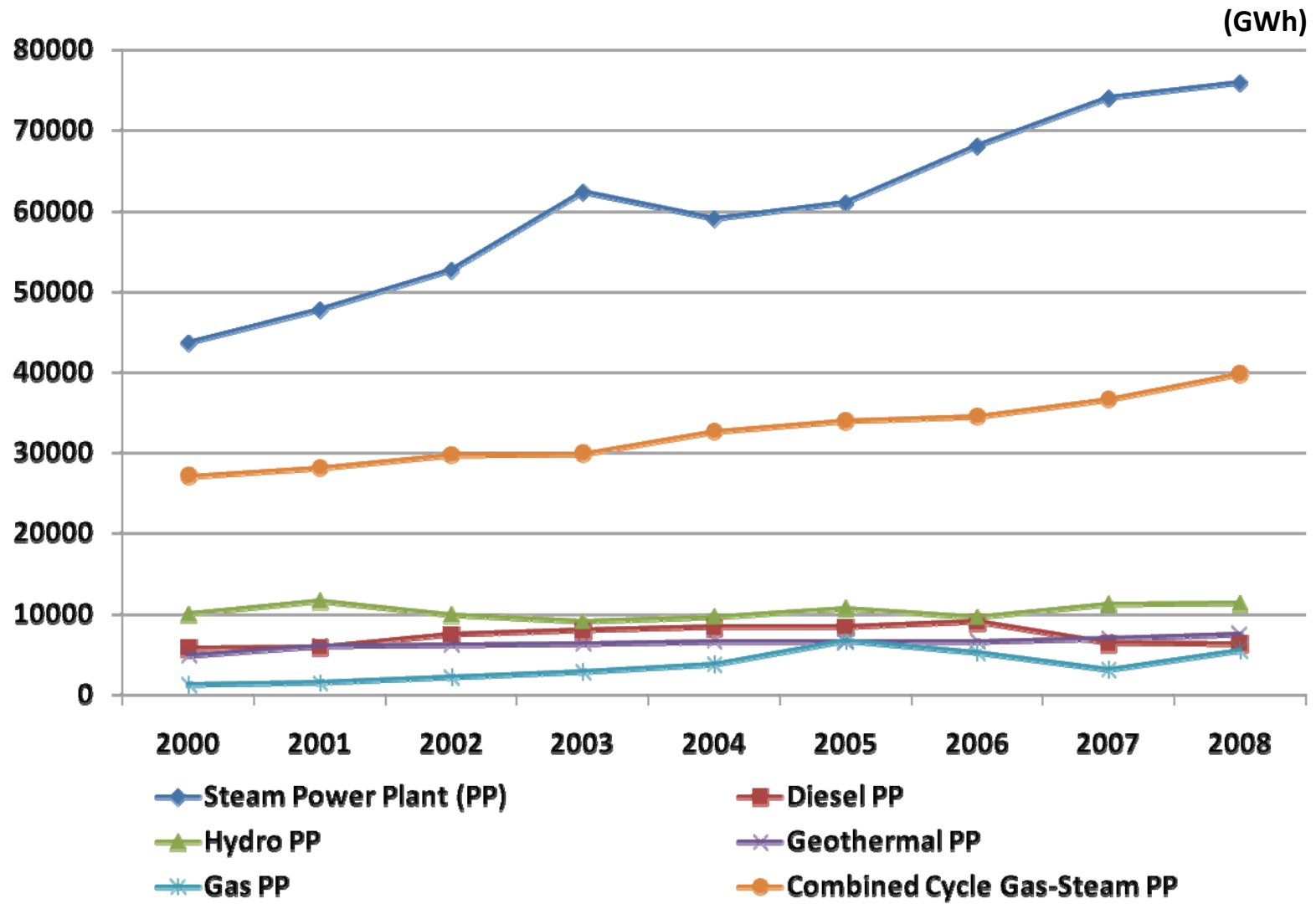
GEOHERMAL RESOURCES AND RESERVES

Island	Resources		Reserve			Installed
	Speculative	Hypotetical	Possible	Probable	Proven	
	(Mwe)	(Mwe)	(Mwe)	(Mwe)	(Mwe)	(Mwe)
Sumatera	5,400	2,267	5,745	15	380	2
Jawa	2,360	1,446	3,225	885	1,815	1000
Bali	70	-	226	-	-	-
Nusa Tenggara	290	359	747	-	15	-
Kalimantan	45	-	-	-	-	-
Sulawesi	950	12	865	150	78	40
Maluku	250	117	327	-	-	-
Papua	50	-	-	-	-	-
Total 256 Location	8,735	4,393	11,135	1,050	2,288	1,042
	13,128		14,473			
Total	27,601					

GEOHERMAL DEVELOPMENT

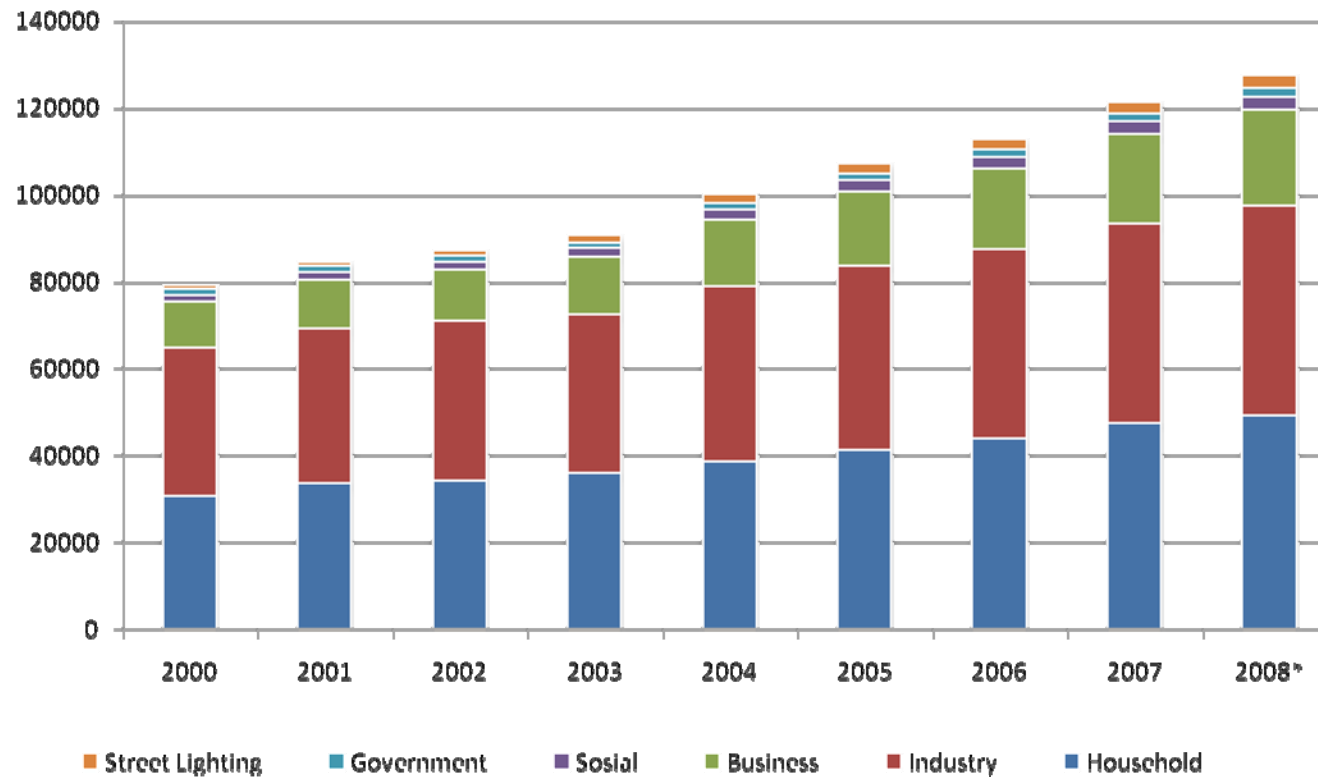


PLN ELECTRICITY PRODUCTION



ENERGY SALES BY CATEGORIES

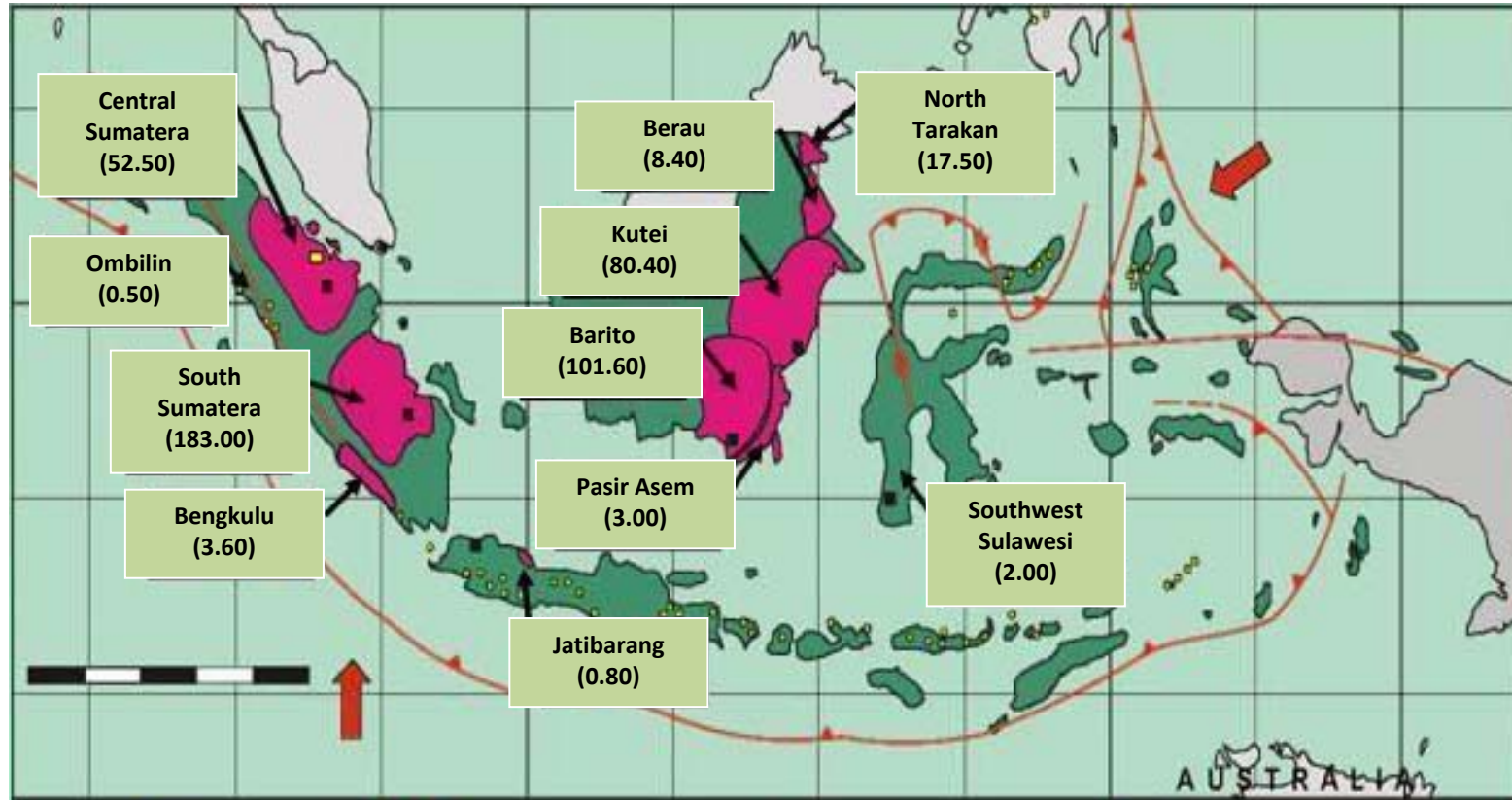
(GWh)



*temporary

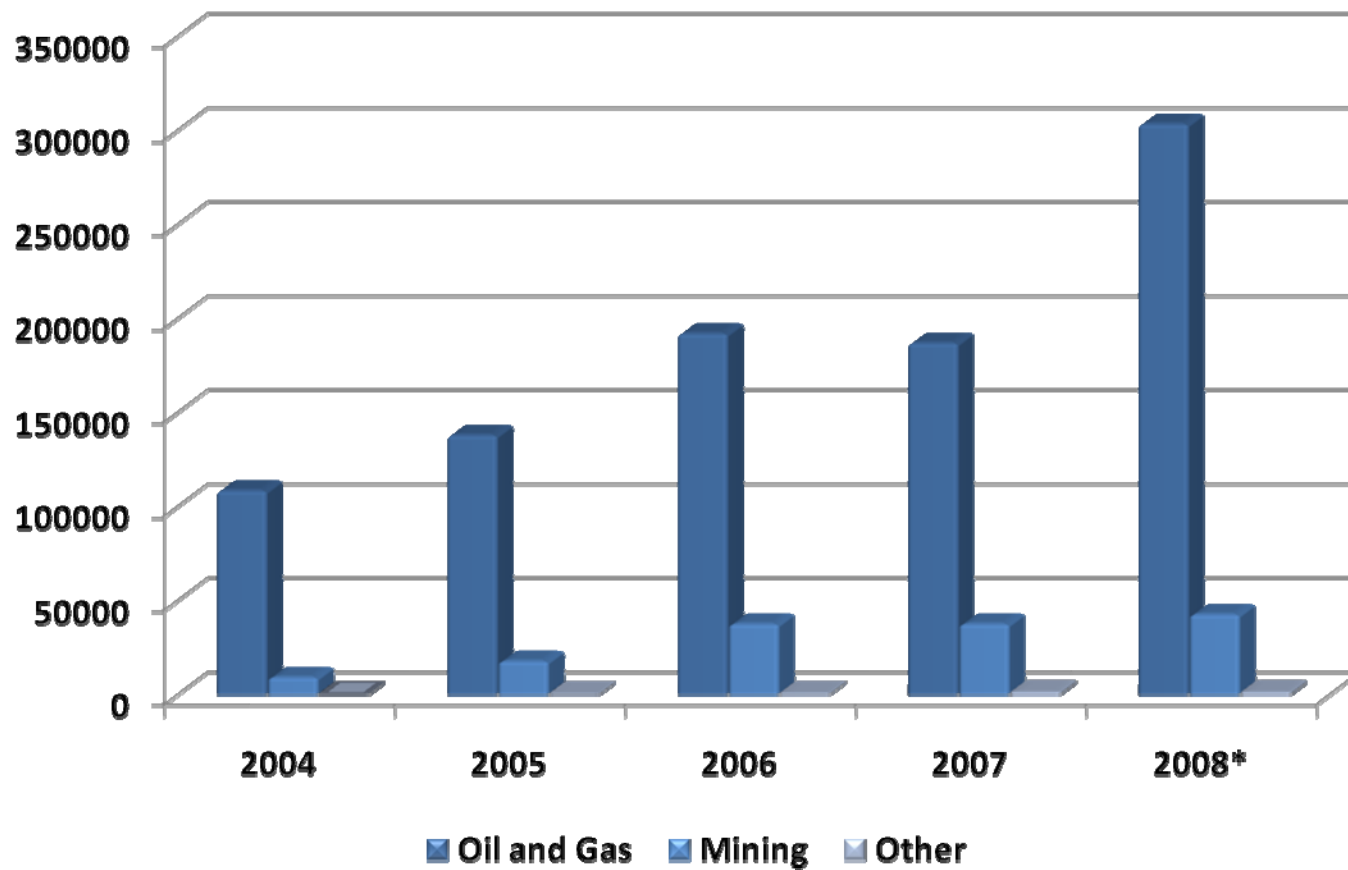
COAL BED METHANE (CBM) RESOURCES

(TCF)



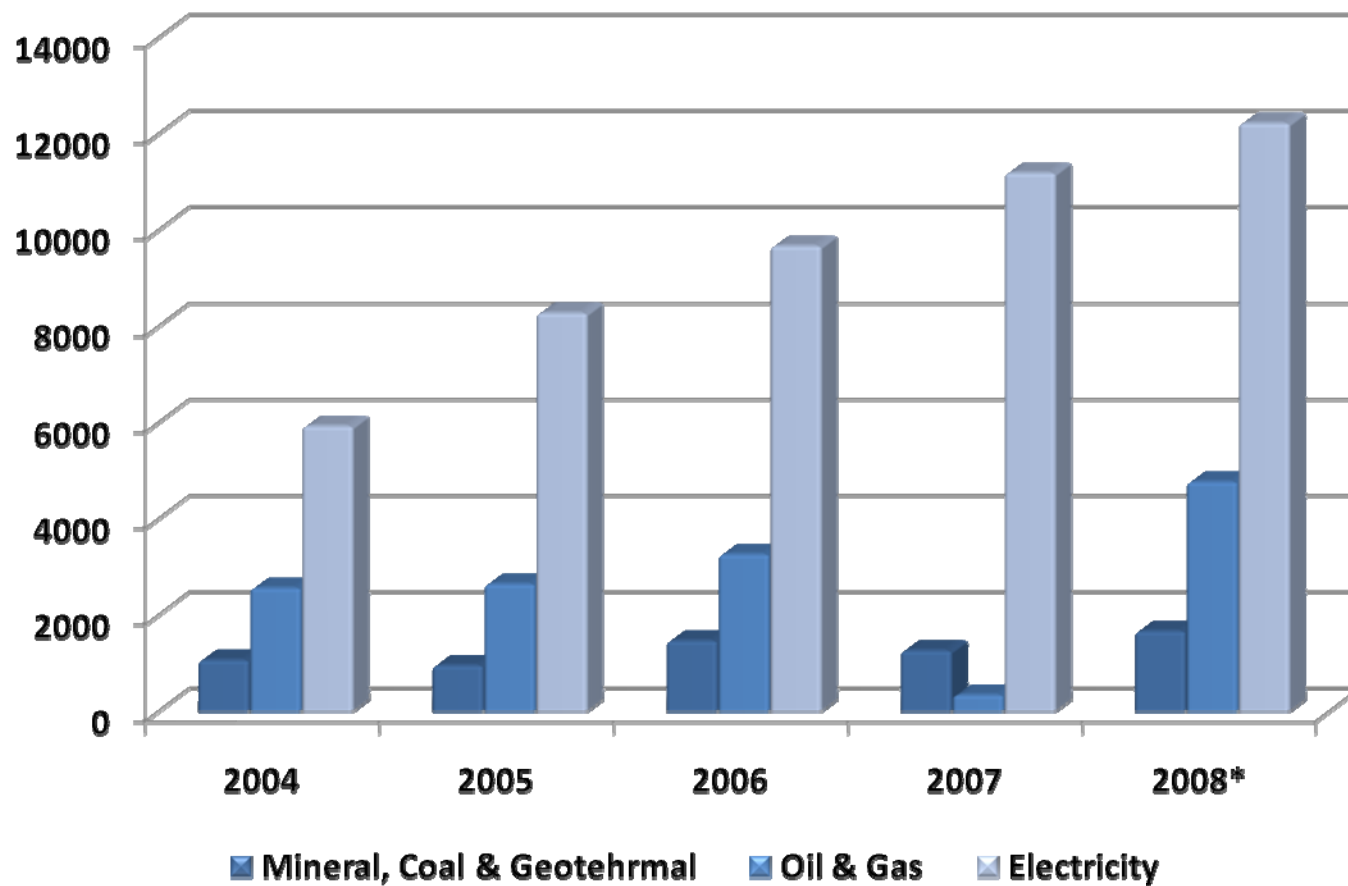
State Revenue ESDM Sector

(Billion Rp)



Investasi

(Million US\$)



2009

**Centre for Data and Information on Energy and Mineral Resources
Ministry of Energy and Mineral Resources**

Jalan Medan Merdeka Selatan No. 18
Jakarta 10110

Tel. / Fax. : +6221 351 9881

<http://www.esdm.go.id>