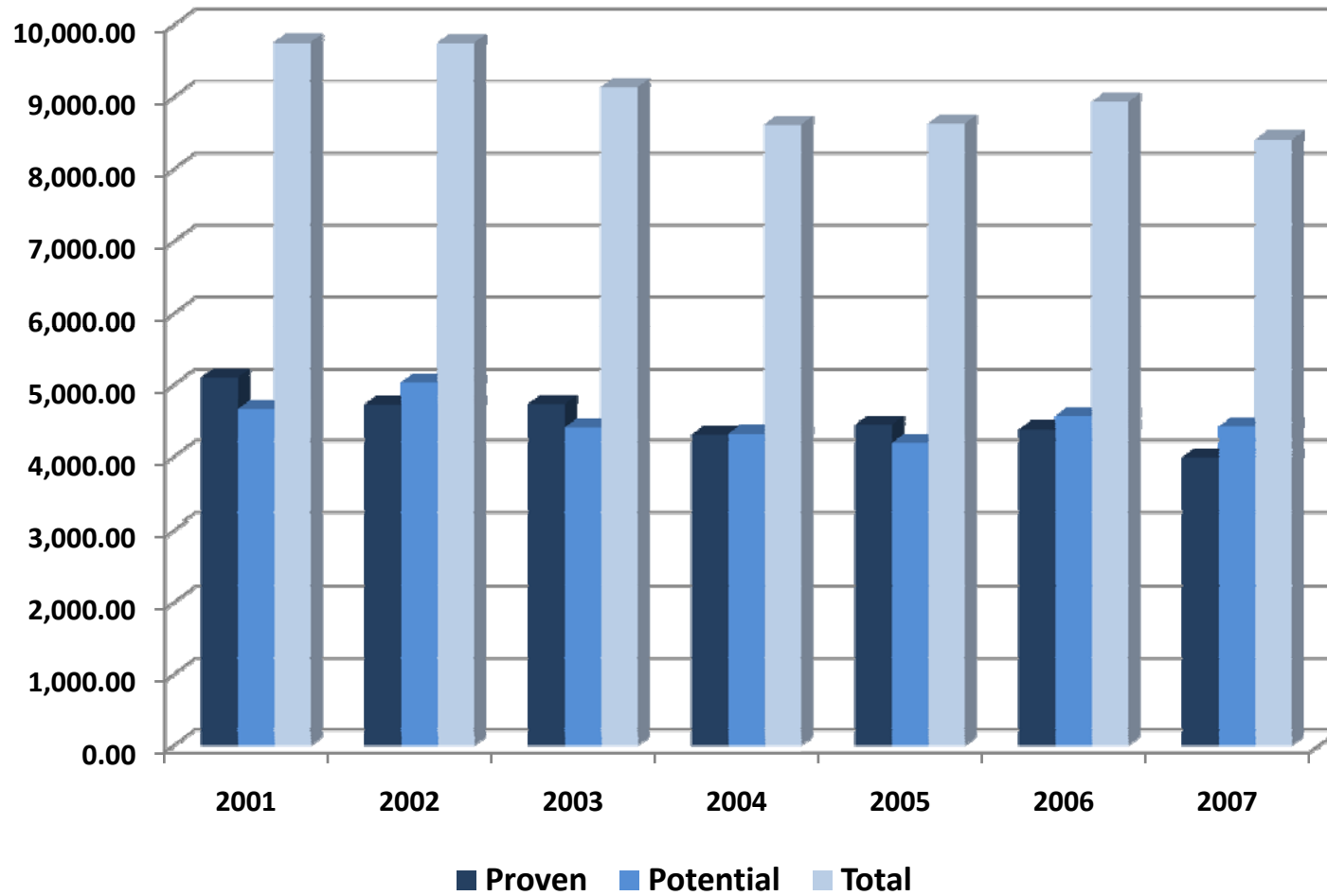


INDONESIA ENERGY STATISTICS 2008

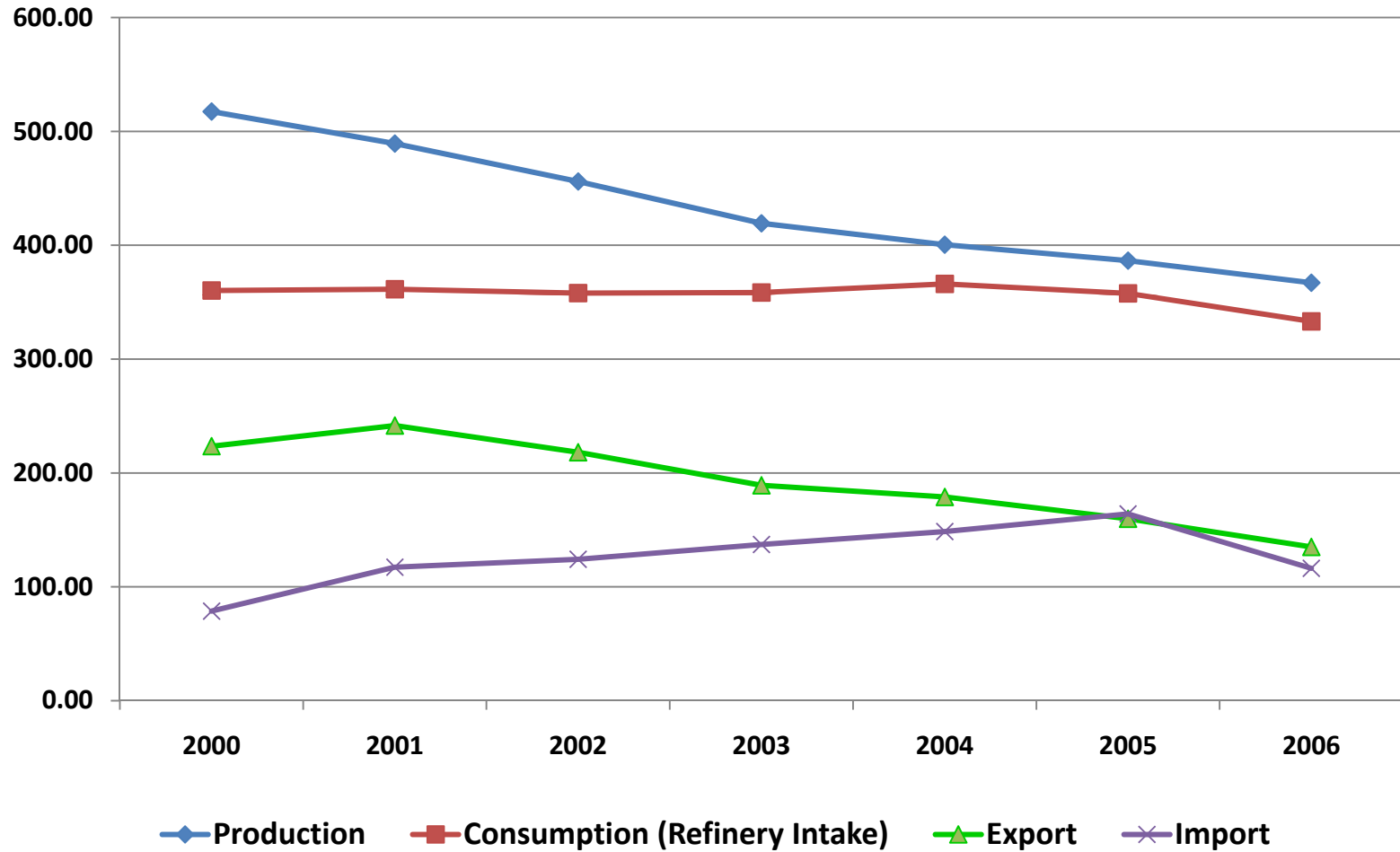


MINISTRY OF ENERGY AND MINERAL RESOURCES

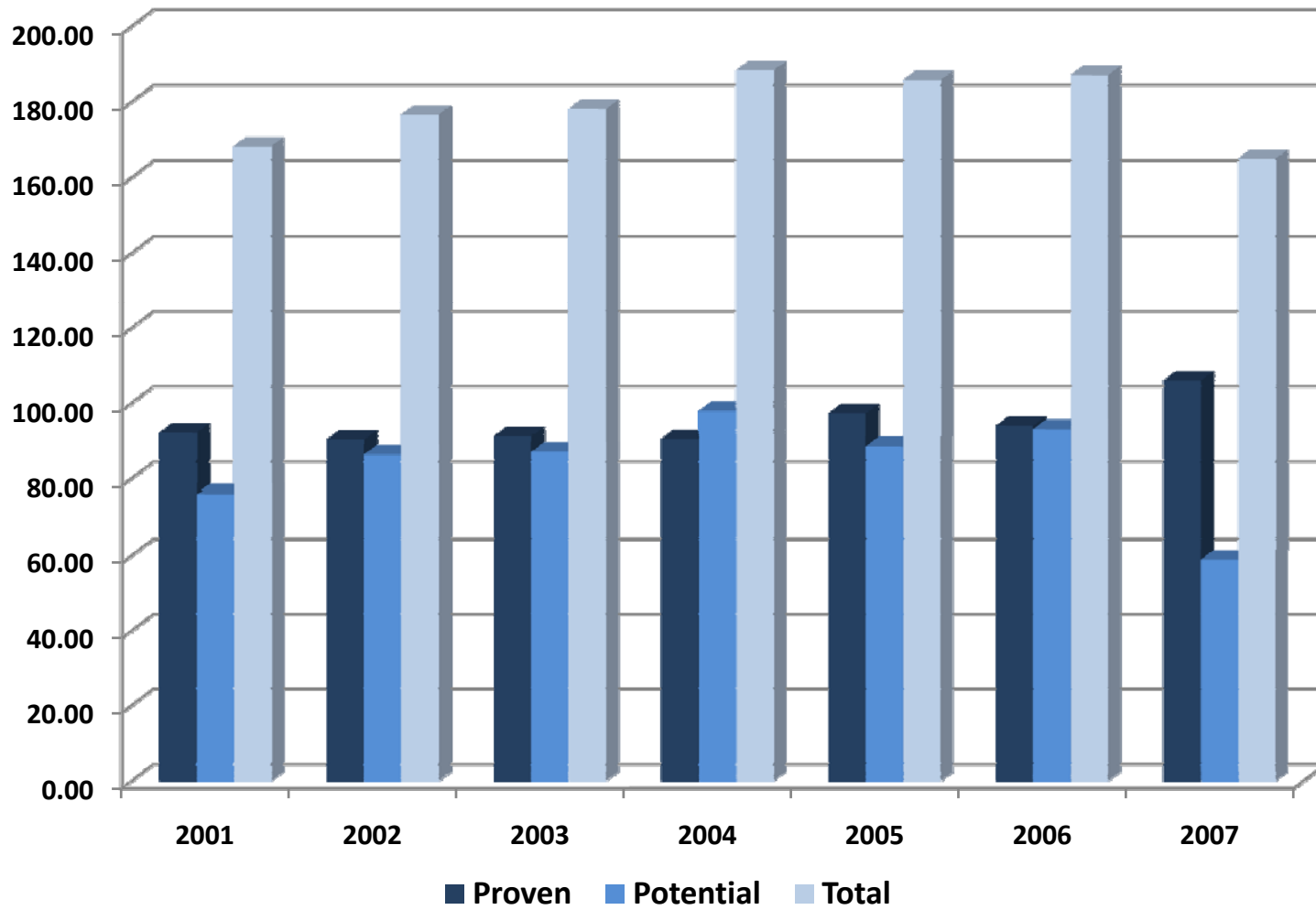
CRUDE OIL RESERVES (MMSTB)



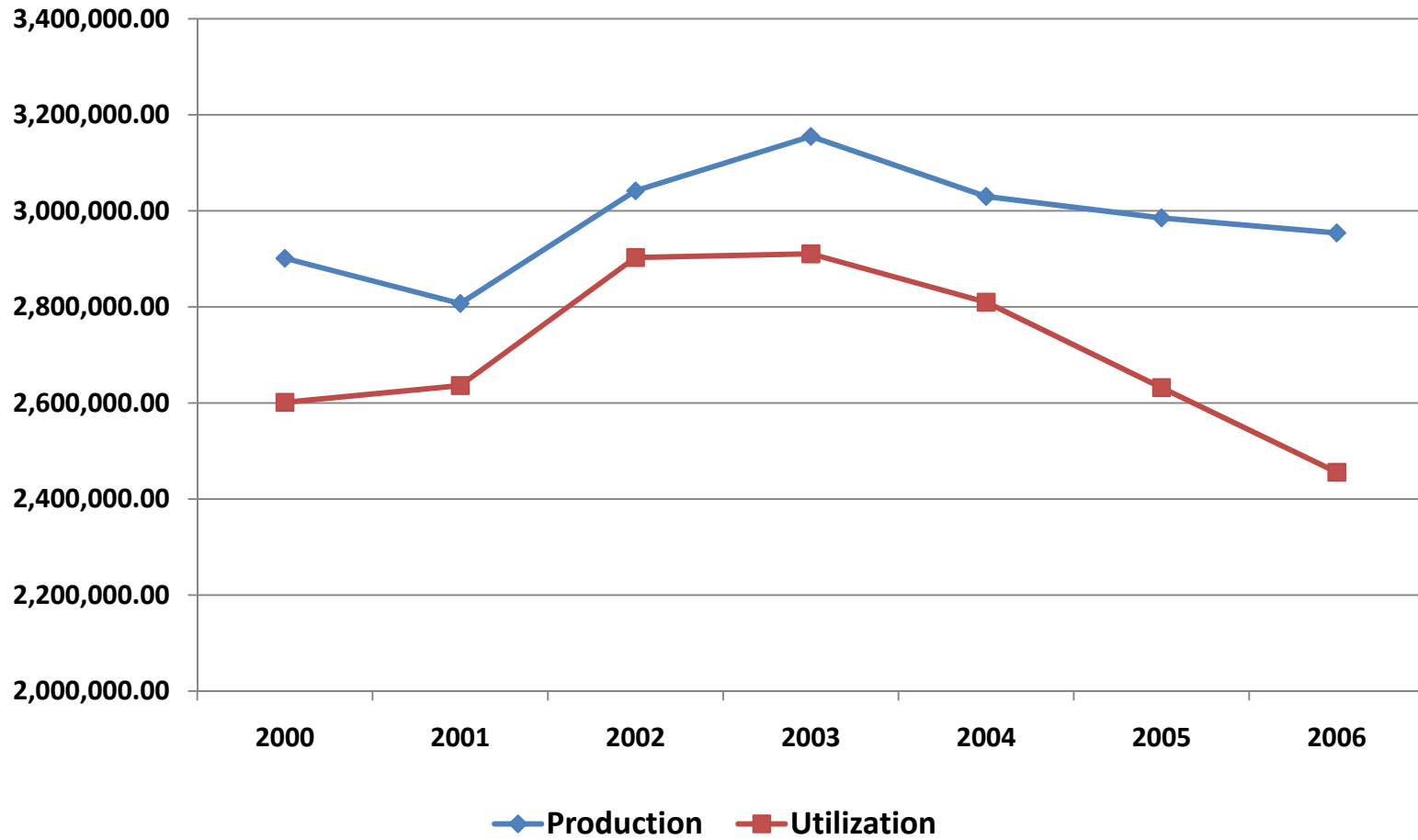
OIL PRODUCTION, CONSUMPTION (REFINERY INTAKE), EXPORT AND IMPORT (Million Barrel)



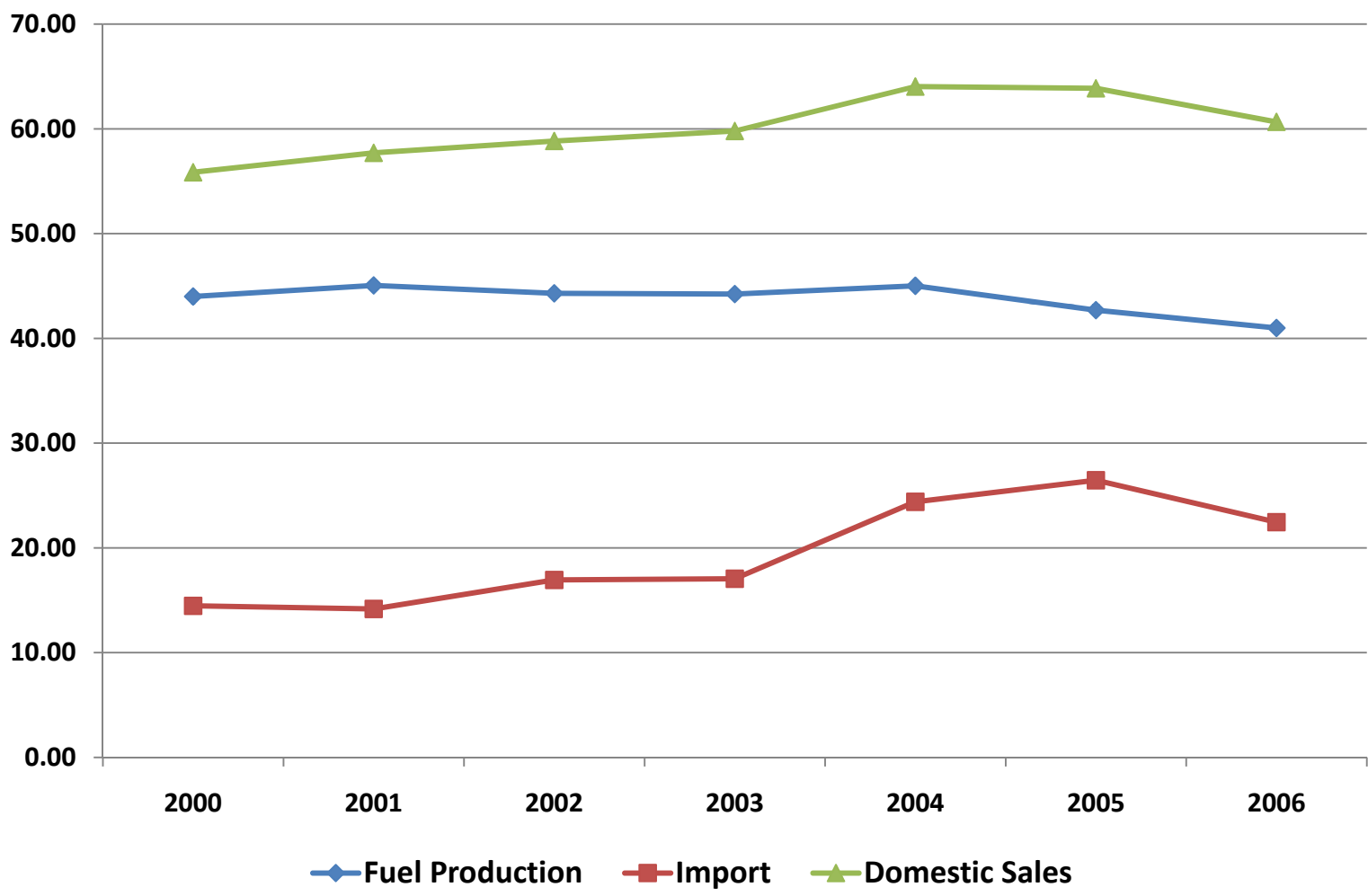
GAS RESERVES (TSCF)



GAS PRODUCTION AND UTILIZATION (MMSCF)



FUEL PRODUCTION, IMPORT AND DOMESTIC SALES (Million Kilo Liters)

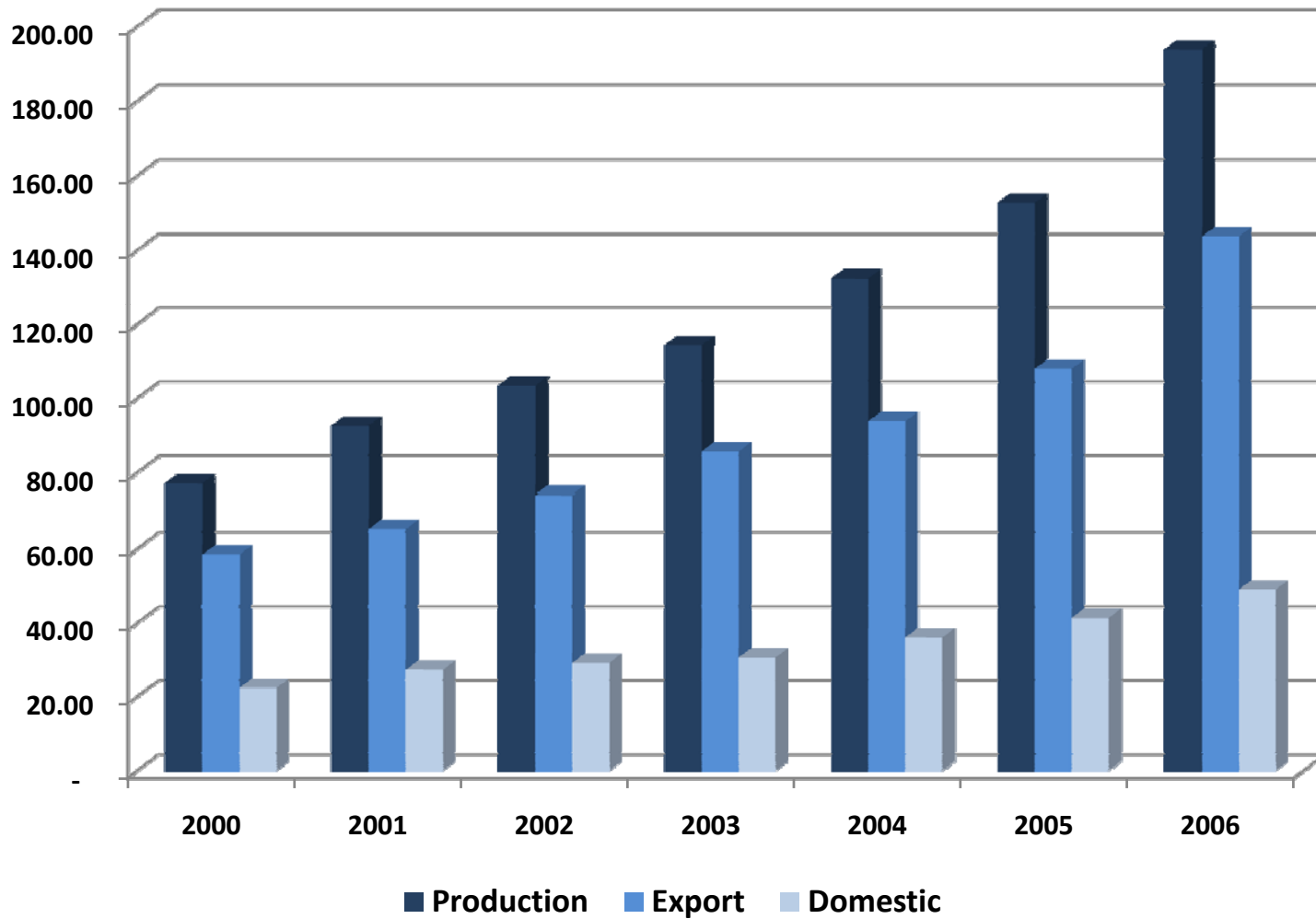


COAL RESOURCES AND RESERVES

(Million Tons)

No.	Province	Resources					Reserves	
		Hypothetic	Inferred	Indicated	Measured	Total	Probable	Proven
1	Jawa	5.47	6.65	0.00	2.09	14.21	-	-
2	Sumatera	13,536.83	12,201.46	13,806.91	14,285.59	53,824.09	12,997.82	904.80
3	Kalimantan	3,389.28	20,653.11	2,881.57	9,300.95	36,224.92	413.14	4,395.49
4	Sulawesi	-	146.91	33.09	53.10	233.10	-	-
5	Maluku	-	2.13	-	-	2.13	-	-
6	Papua	89.40	64.02	-	-	153.42	-	-
	Total	17,020.98	33,074.28	16,721.58	23,641.72	90,451.87	13,410.96	5,300.29

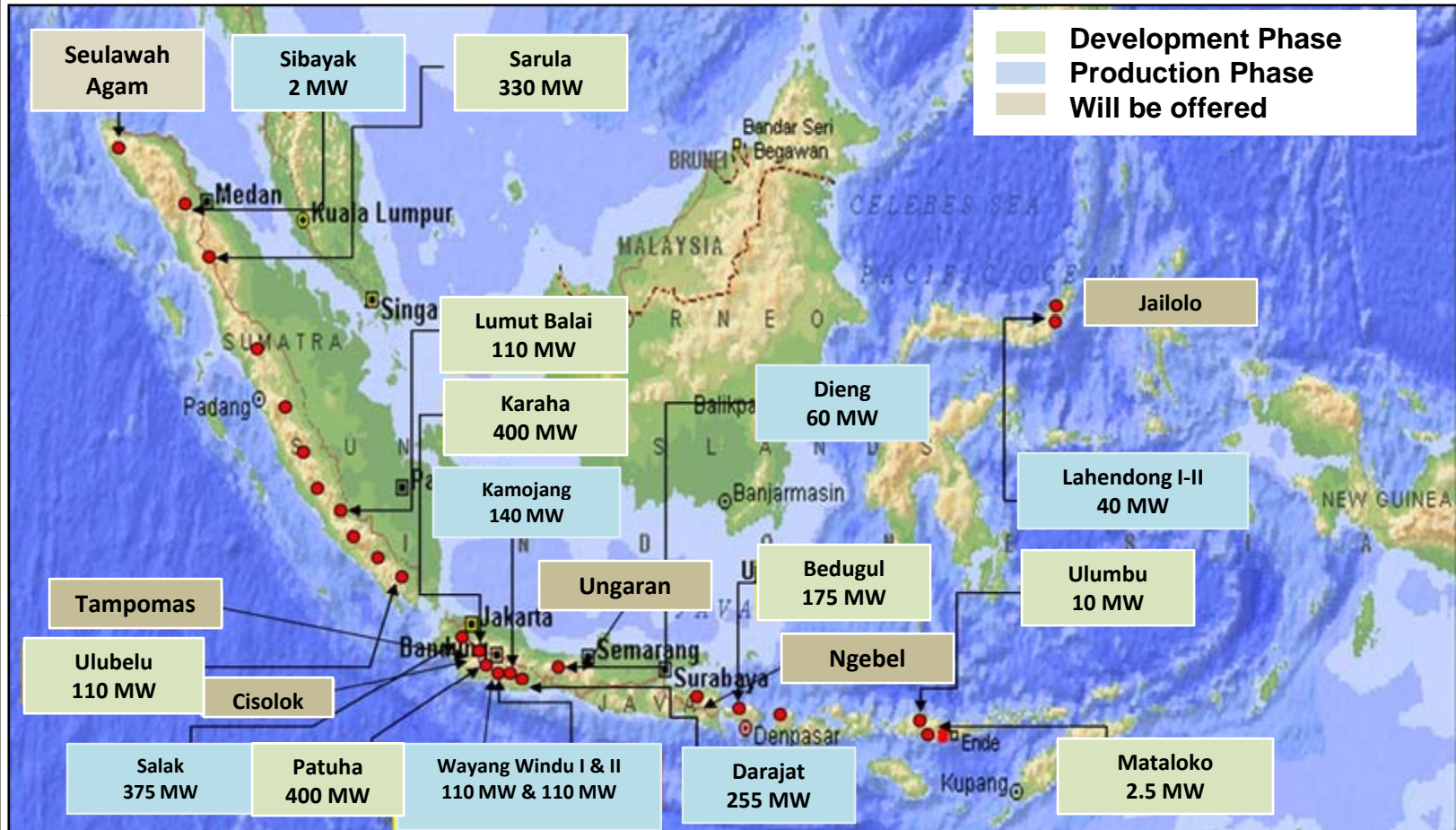
COAL PRODUCTION, EXPORT AND DOMESTIC SALES (Million Tons)



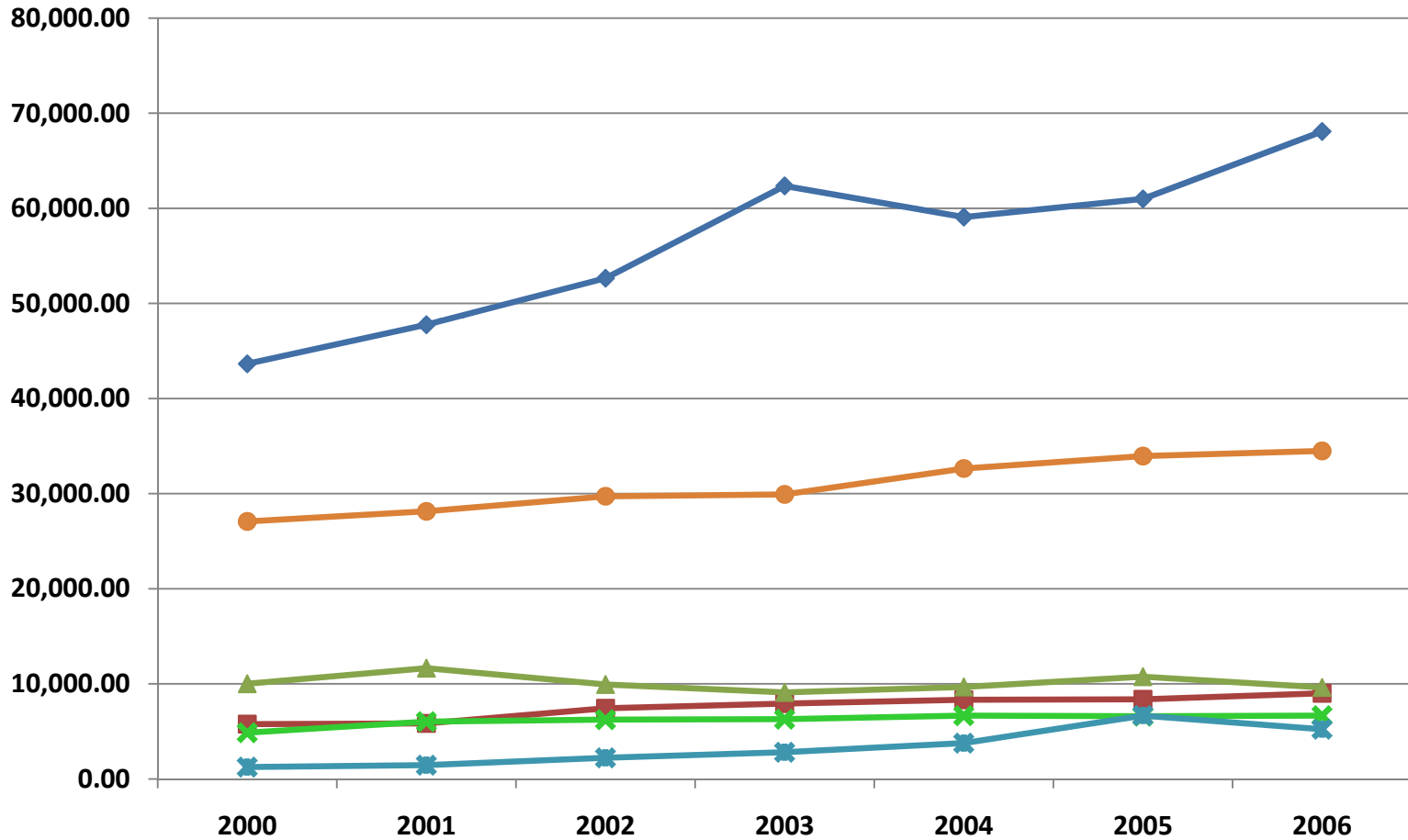
**GEOHERMAL RESOURCES AND RESERVES
(MW)**

No	Location	Resources		Reserves			Total
		Speculative	Hipotethic	Probable	Possible	Proven	
1	Sumatera	5,275	2,194	5,555	15	380	13,419
2	Jawa	2,235	1,446	3,175	885	1,815	9,556
3	Bali-Nusa Tenggara	360	359	943	-	14	1,676
4	Sulawesi	925	12	865	150	78	2,030
5	Maluku	400	37	297	-	-	734
6	Kalimantan	45	-	-	-	-	45
7	Papua	50	-	-	-	-	50
Total		9,290	4,048	10,835	1,050	2,287	27,510

GEOHERMAL DEVELOPMENT

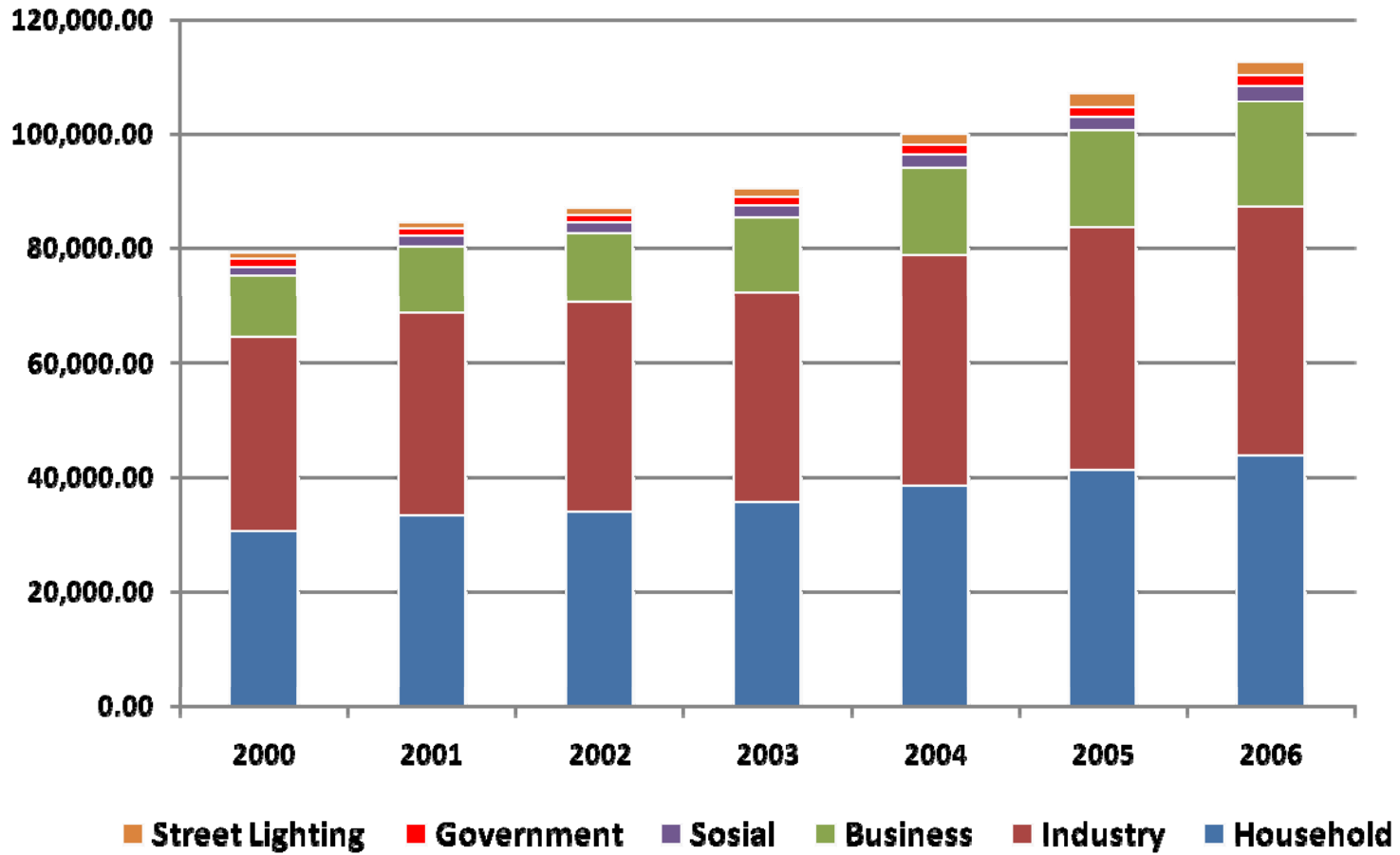


ELECTRICITY PRODUCTION (GWh)

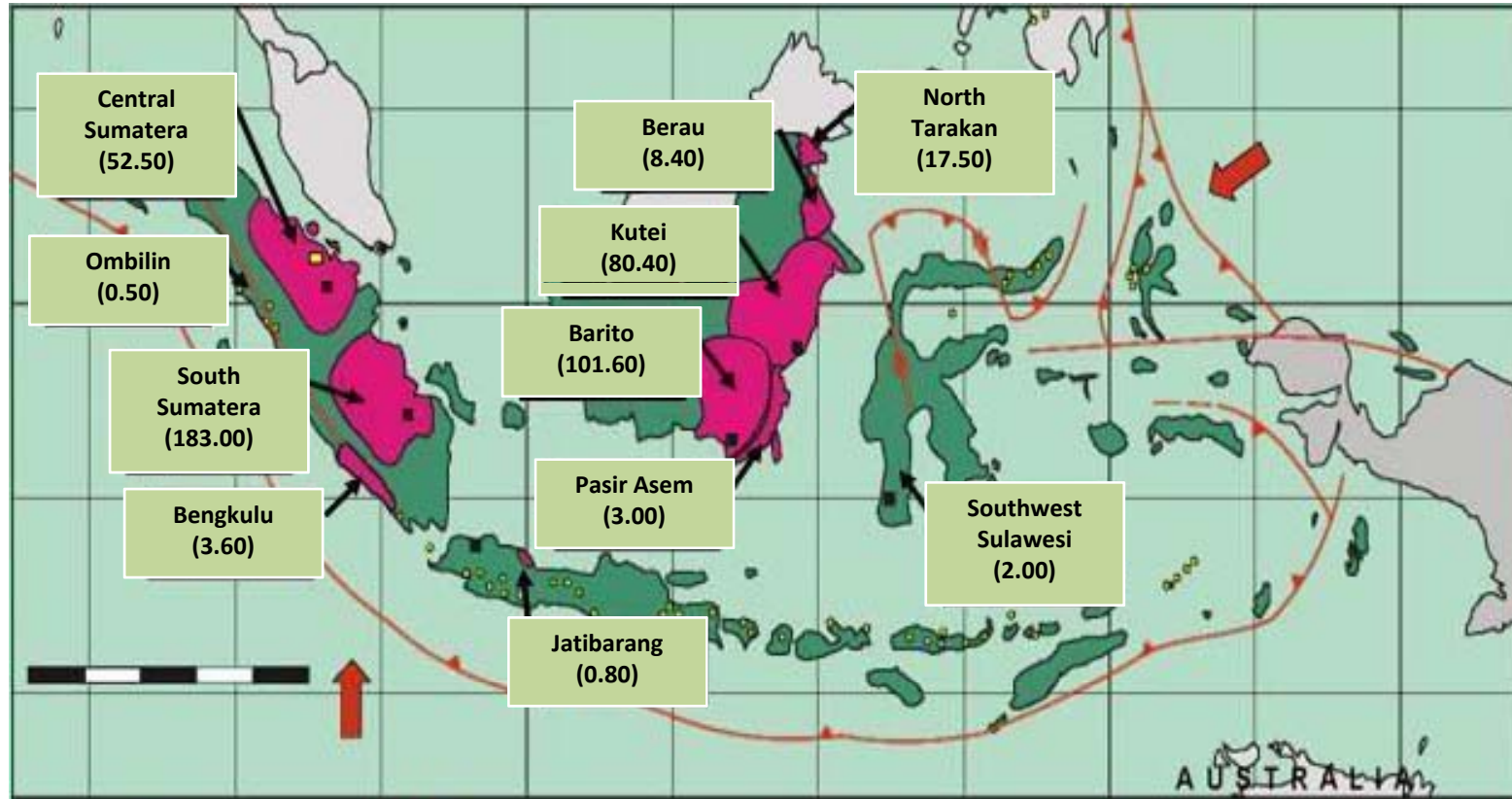


- ◆ Steam Power Plant (PP)
- Diesel PP
- ▲ Hydro PP
- ✕ Geothermal PP
- ✕ Gas PP
- Combined Cycle Gas-Steam PP

ENERGY SALES BY CATEGORIES (GWh)



COAL BED METHANE (CBM) RESOURCES (TCF)



2008

**Centre for Data and Information on Energy and Mineral Resources
Ministry of Energy and Mineral Resources**

Jalan Medan Merdeka Selatan No. 18

Jakarta 10110

Tel. / Fax. : +6221 351 9881

<http://www.esdm.go.id>