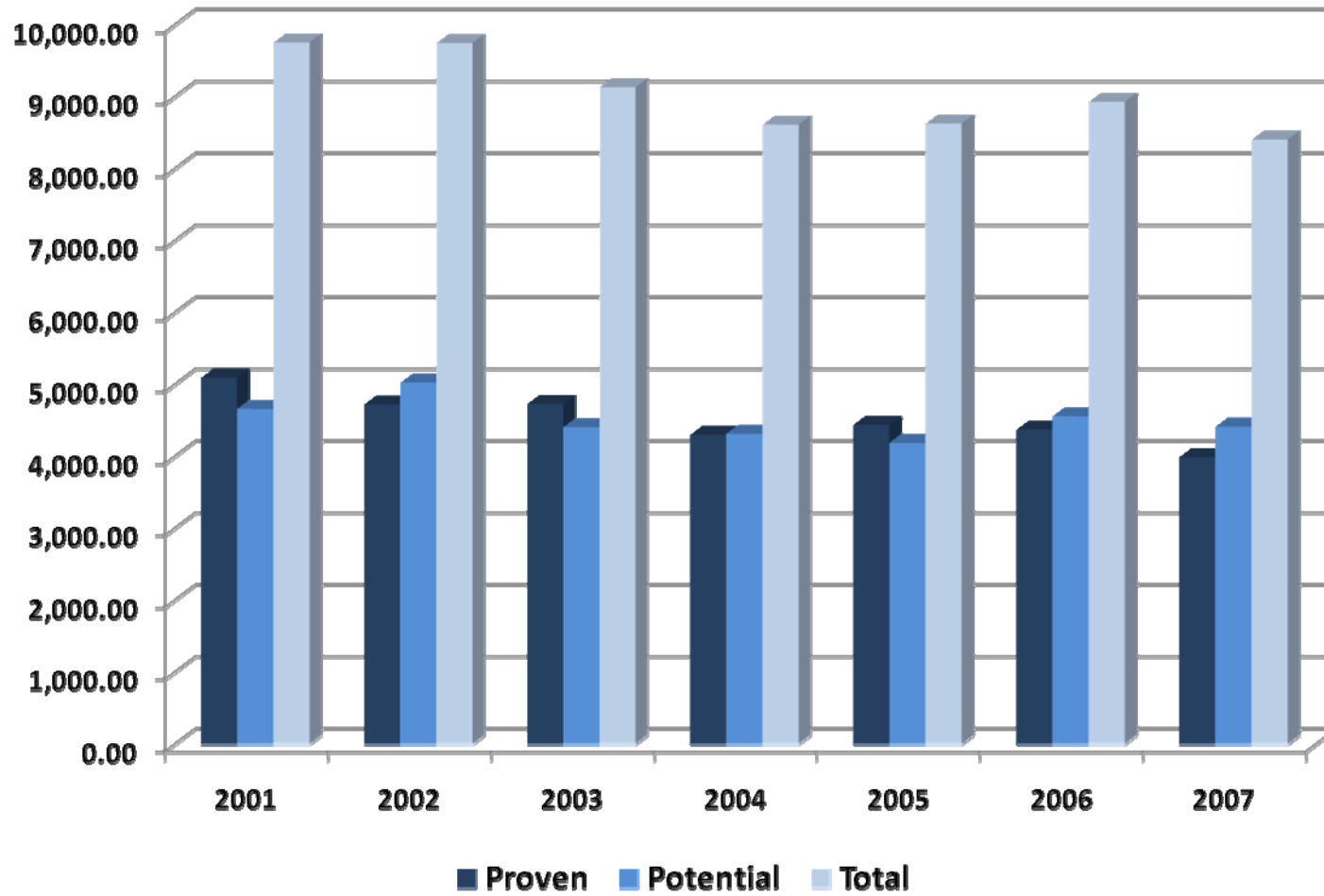


INDONESIA ENERGY STATISTICS 2008

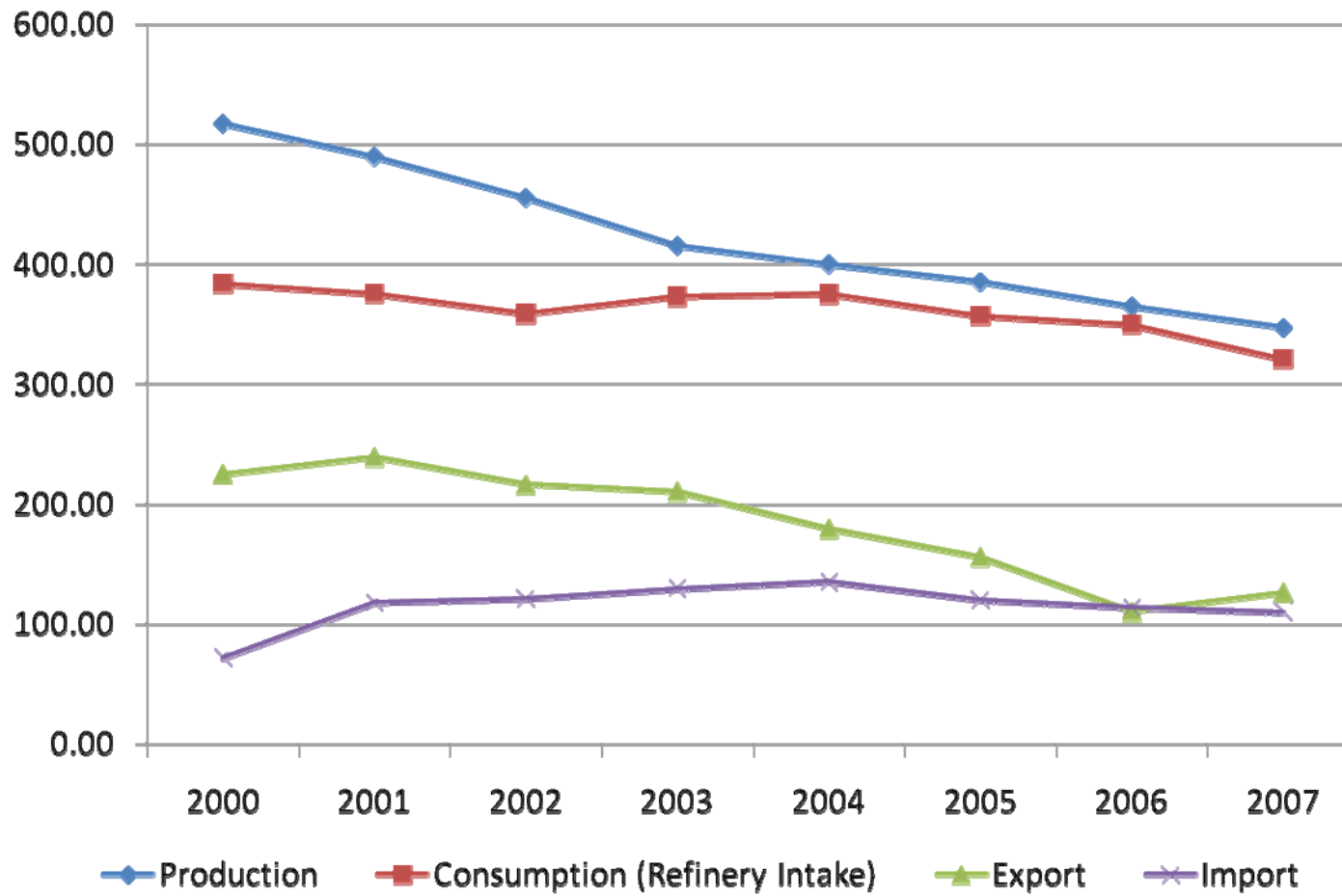


MINISTRY OF ENERGY AND MINERAL RESOURCES

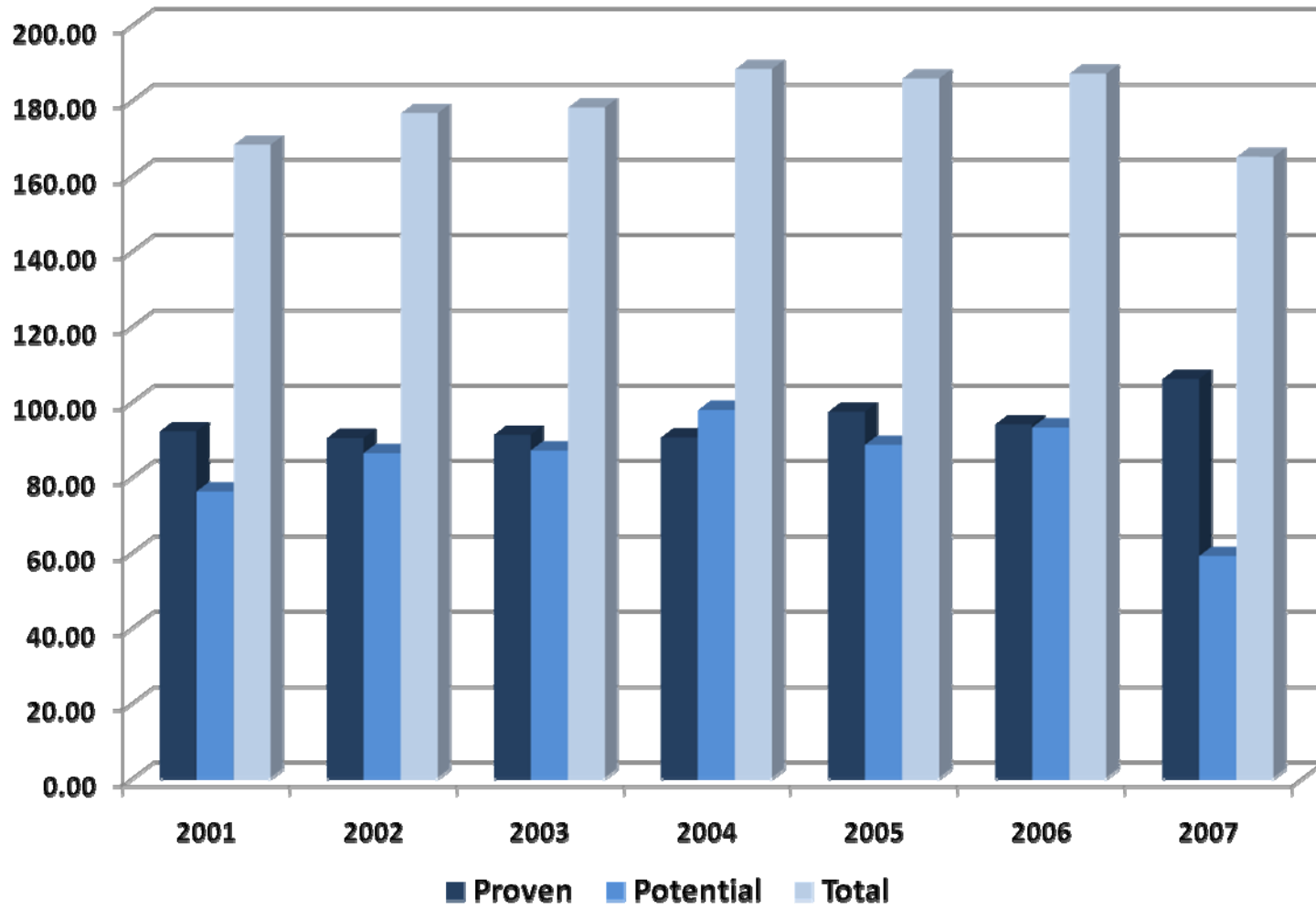
CRUDE OIL RESERVES (MMSTB)



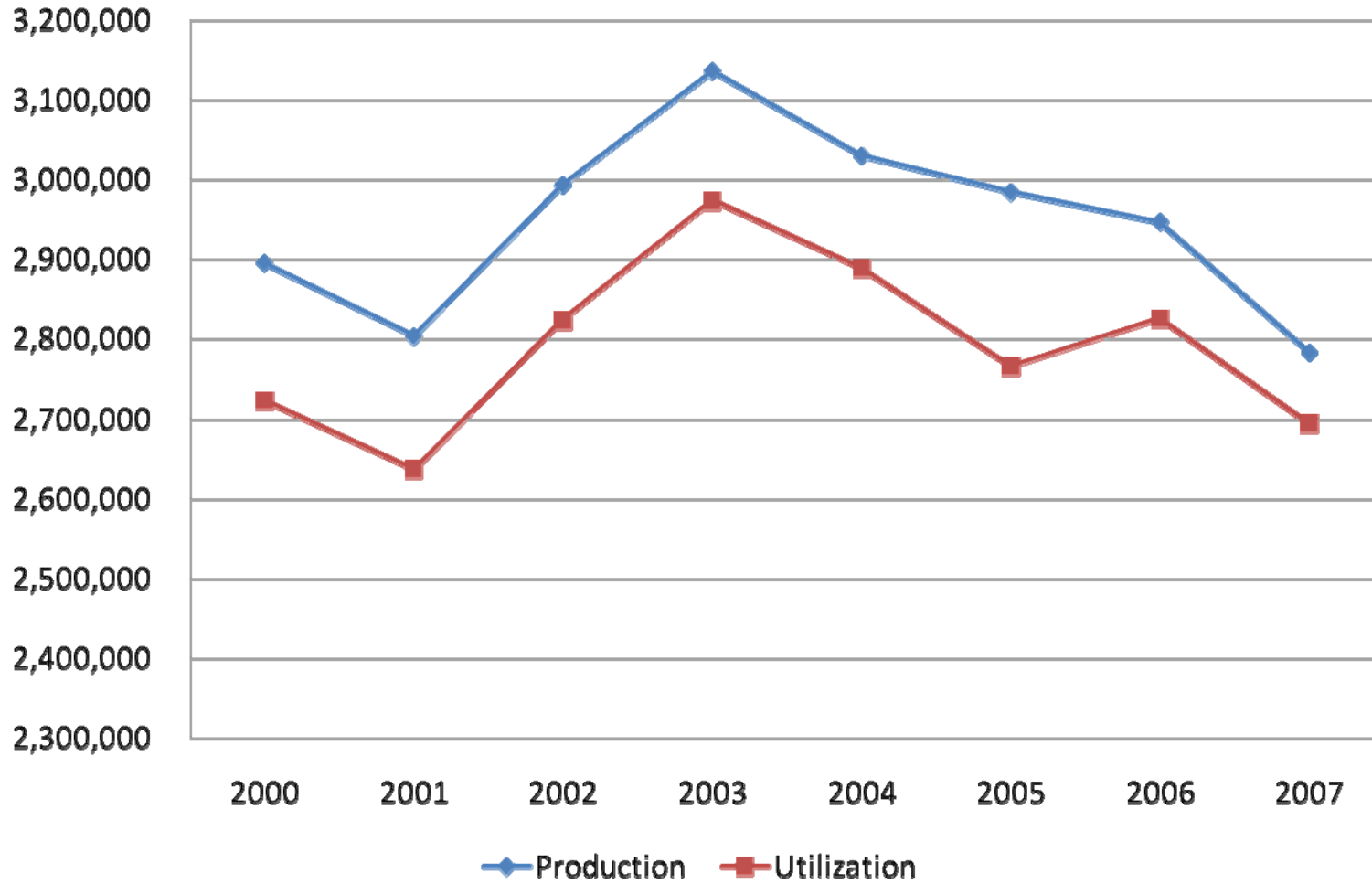
OIL PRODUCTION, CONSUMPTION (REFINERY INTAKE), EXPORT AND IMPORT (Million Barrel)



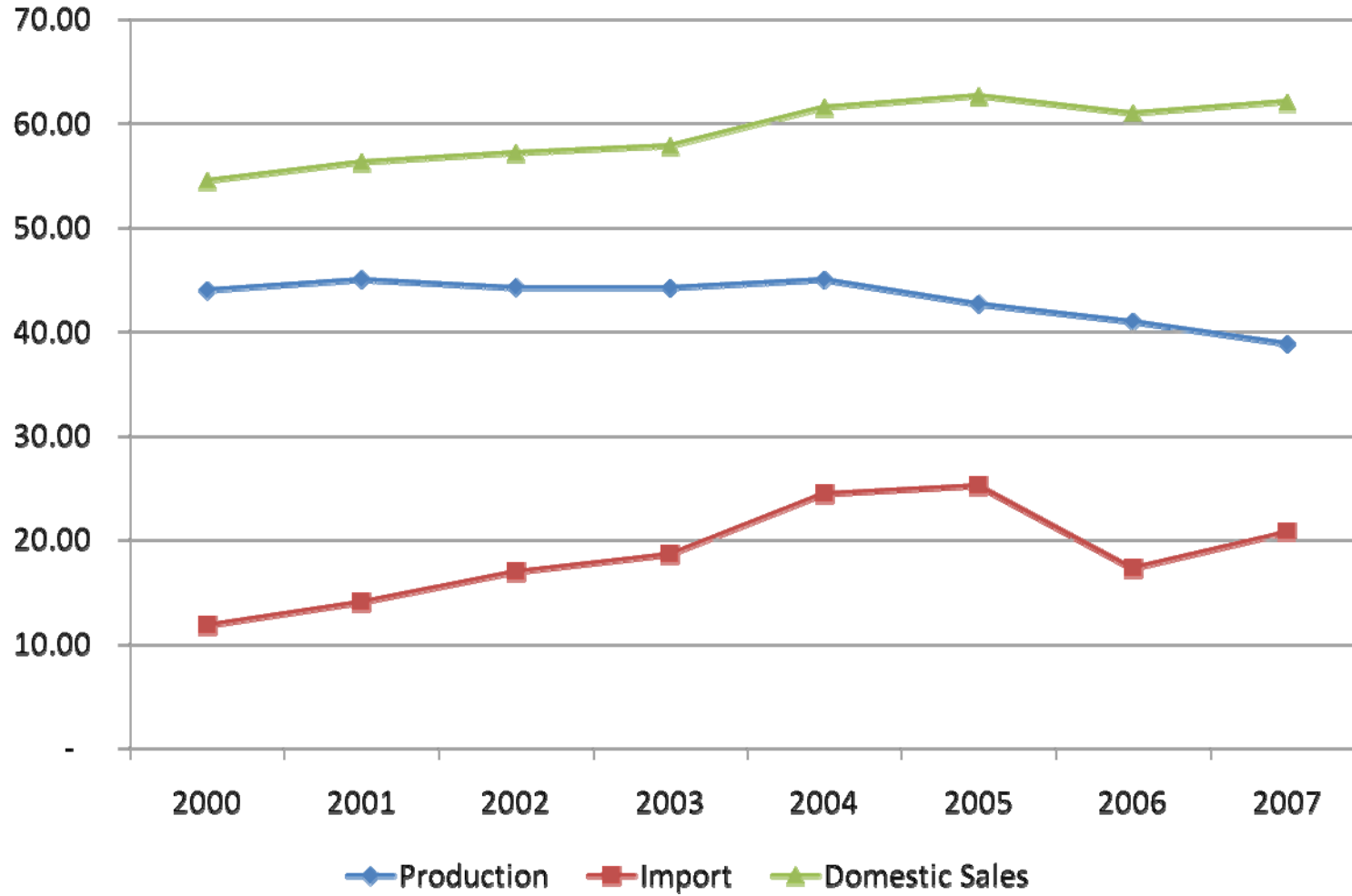
**GAS RESERVES
(TSCF)**



GAS PRODUCTION AND UTILIZATION (MMSCF)



FUEL PRODUCTION, IMPORT AND DOMESTIC SALES
 (Million Kilo Liters)

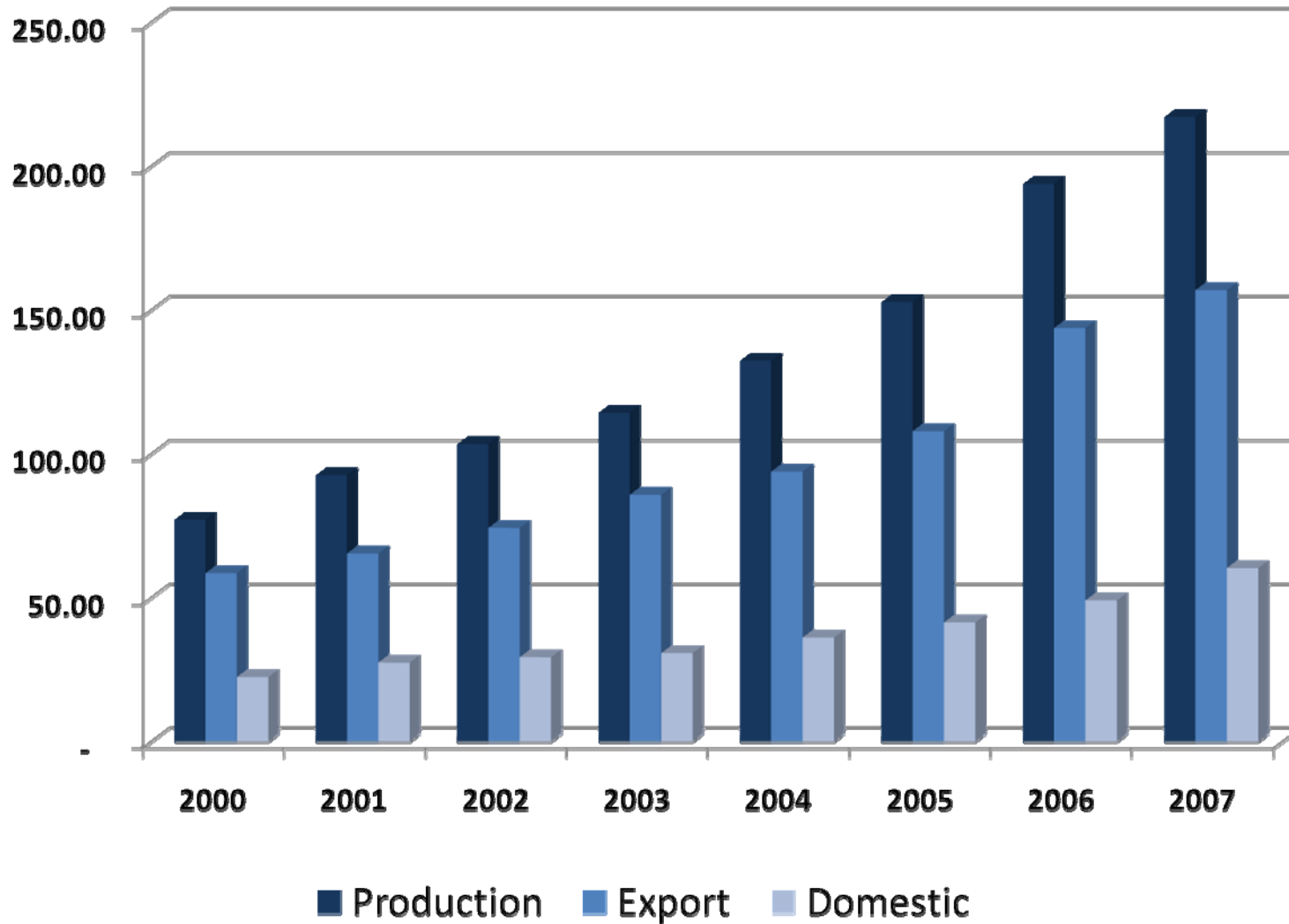


COAL RESOURCES AND RESERVES

(Million Tons)

No	Island	Resources					Reserves		Total
		Hipotetic	Inferred	Indicated	Measured	Total	Probable	Proven	
1	JAVA	5.47	6.65	0.00	2.09	14.21	0.00	0.00	0.00
2	SUMATERA	20,148.47	13,949.29	10,734.37	7,699.18	52,531.31	12,997.82	904.80	13,902.62
3	KALIMANTAN	3,389.28	21,028.93	2,893.82	13,156.04	40,468.07	413.14	4,395.49	4,808.63
4	SULAWESI	0.00	146.91	33.09	53.10	233.10	0.00	0.00	0.00
5	MALUKU	0.00	2.13	0.00	0.00	2.13	0.00	0.00	0.00
6	PAPUA	89.40	64.02	0.00	0.00	153.42	0.00	0.00	0.00
	Total	23,632.62	35,197.93	13,661.29	20,910.41	93,402.24	13,410.96	5,300.29	18,711.25

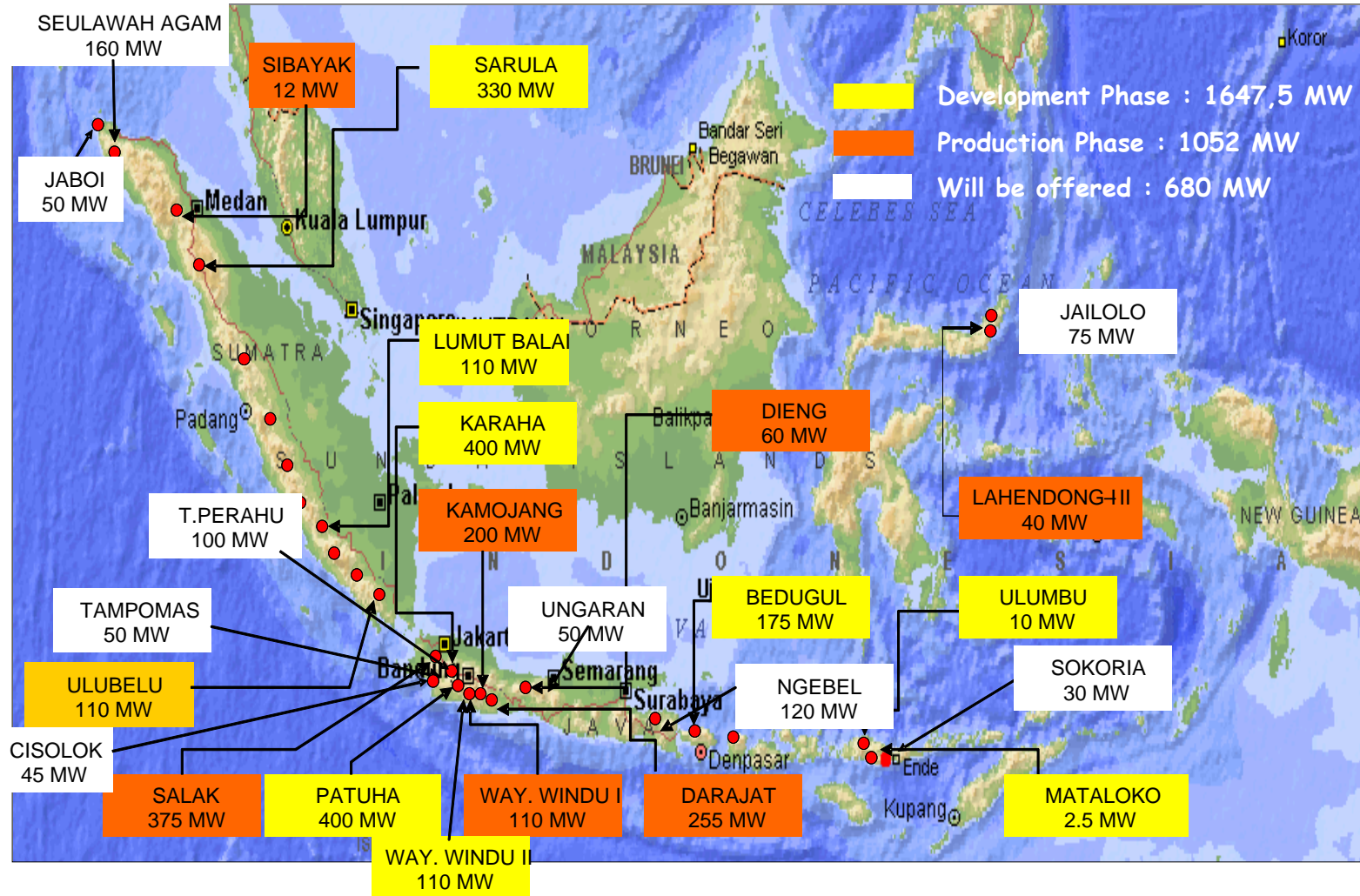
COAL PRODUCTION, EXPORT AND DOMESTIC
(Million Tons)



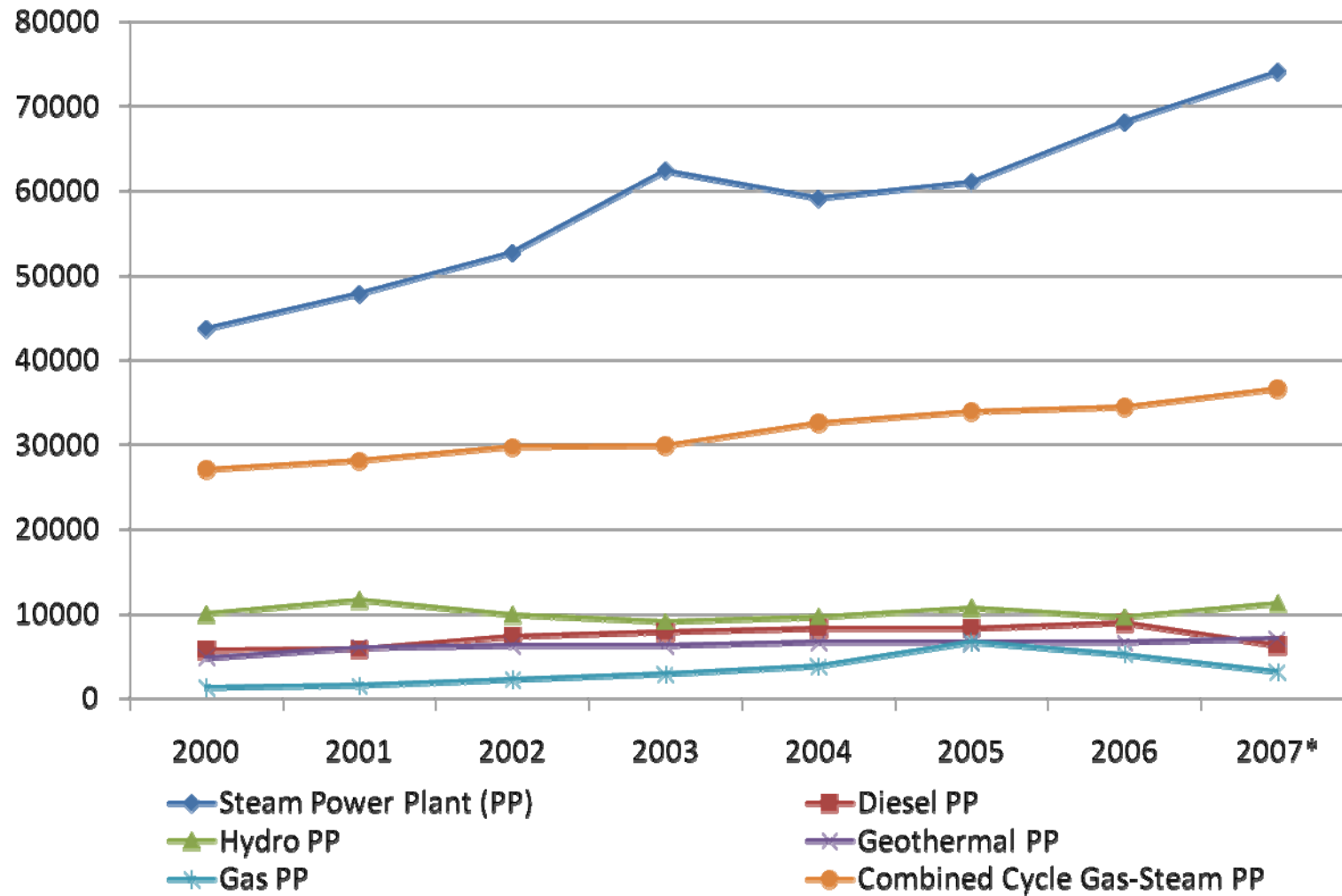
GEOHERMAL RESOURCES AND RESERVES

Island	Resources		Reserve		
	Speculative	Hypotetical	Possible	Probable	Proven
Sumatera	5,000	2,194	5,745	15	380
Java	1,960	1,771	3,225	885	1,815
Bali-Nusa Tenggara	410	359	973	-	15
Kalimantan	45	-	-	-	-
Sulawesi	900	32	865	150	78
Maluku	370	37	327	-	-
Papua	50	-	-	-	-
Total 256 Locations	8,735	4,393	11,135	1,050	2,288
	13,128			14,473	
	27,601				

GEOHERMAL DEVELOPMENT

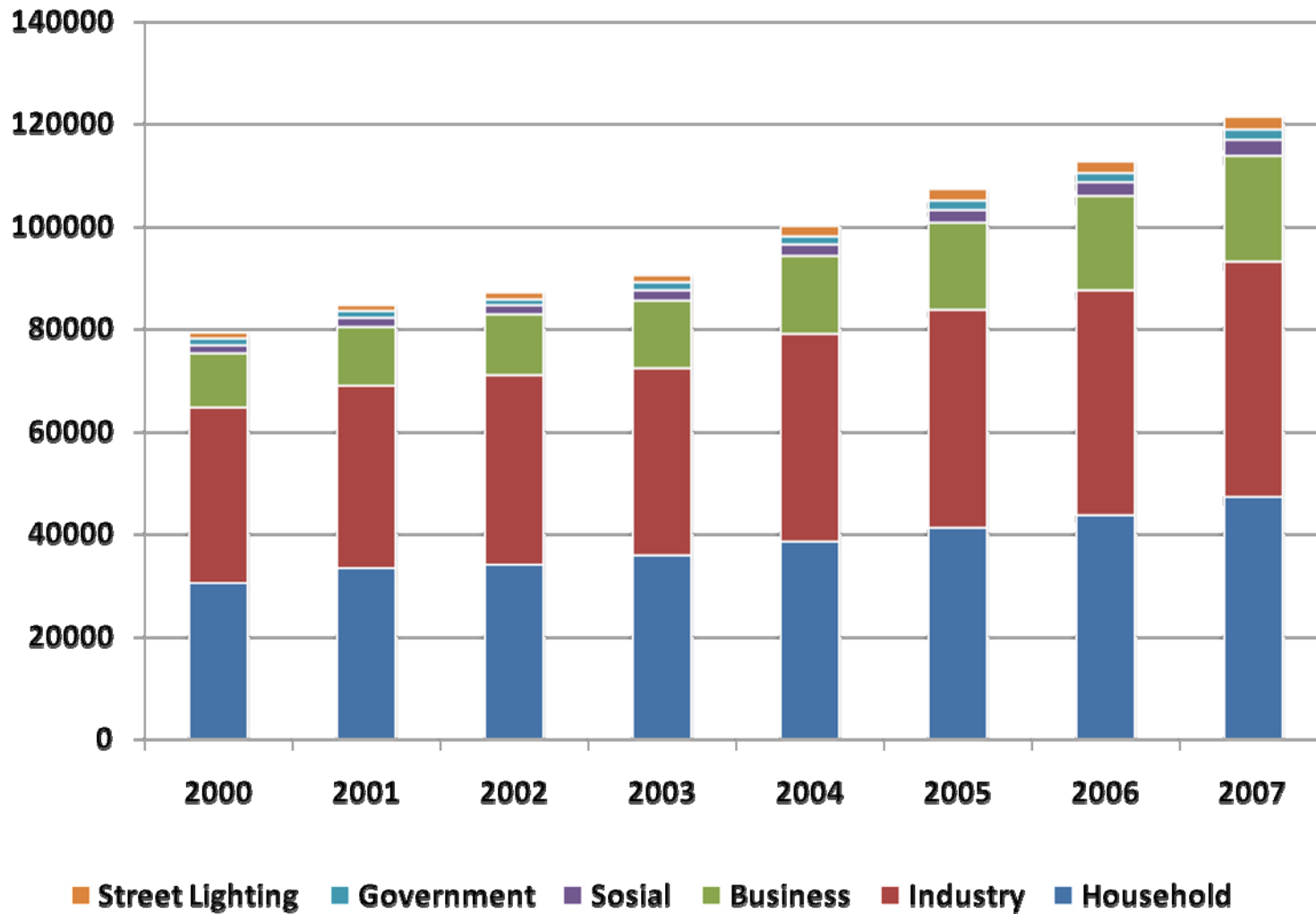


PLN ELECTRICITY PRODUCTION (GWh)

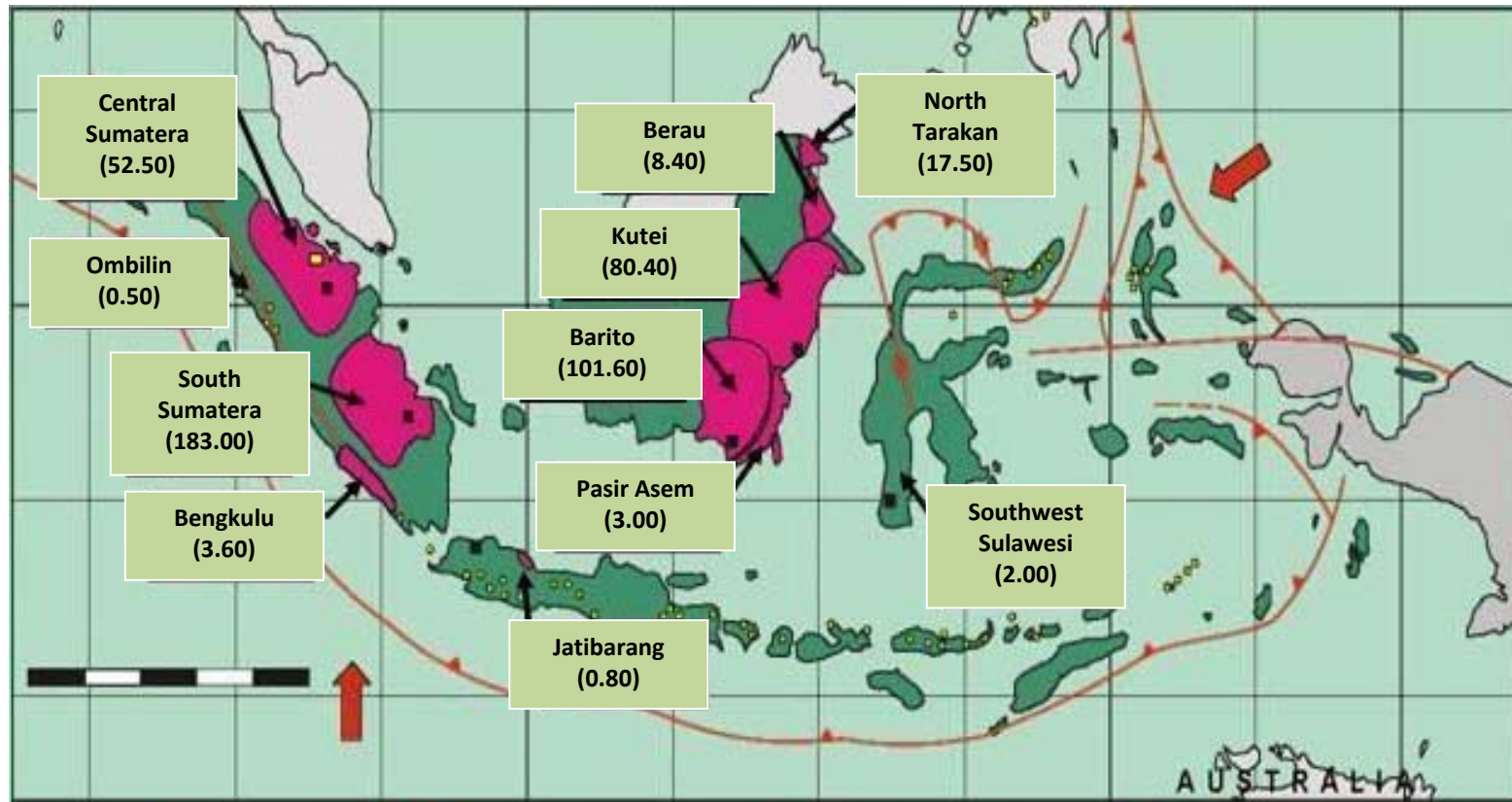


* temporary

ELECTRICITY SALES BY CATEGORIES (GWh)



COAL BED METHANE (CBM) RESOURCES (TCF)



2008

**Centre for Data and Information on Energy and Mineral Resources
Ministry of Energy and Mineral Resources**

Jalan Medan Merdeka Selatan No. 18

Jakarta 10110

Tel. / Fax. : +6221 351 9881

<http://www.esdm.go.id>